

Christmas

@ JK Eder TAG SALE

Start: 20. December **Sluiting:** 27. December

www.eurogenes.com



Carf Emeraude EX-91-NL

The **#1** GTPI bull

**>3.1 PTAT &
DPR >1.5**

©JONES



515HO00318

Aurora

MITCHELL

Tatum Mitchell x Bombero x Mayfield x Iota
OUTCROSS



GTPI **+2770**

PTAT **+3.12**

Production +1371 Milk // +0.11% Fat // +0.05% Protein
Functional SCS 2.63 // PL+5.2 // DPR+1.5 // SCE 6.7
Conformation UDC+2.70 // FLC+1.88



GLPI **+3390**

Conf. **+11**

©STEELE



515HO003

DG OH

DOBLE *RC

Salvatore x Rubicon x Aikman x Mascot x Durham



GTPI **+2709**

PTAT **+2.45**

Top 10 GTPI
*RC bull

+1589M
SCS 2.68
SCE 6.2

UDC+2.42
FLC+1.41
Sloped rumps good TL



GLPI **+3496**

Conf. **+10**



ARROW

GTPI **+2609** ♀
PTAT **+3.63**

+1106M +0.07%F +0.04%P
SCS 2.81 / DPR+0.4 / SCE 7.8
UDC+3.30 / FLC+2.26

8 EXCELLENT generations



Visit WWW.AI-TOTAL.COM
for Arrow's video

AI^{total}

WWW.AI-TOTAL.COM

INFORMATIE / INFORMATION

Start	Vrijdag 20 december / Friday 20. December
Einde / Closing	Vrijdag 27 december, 21:00 uur Friday 27. December, 09:00 PM (Dutch Time)

VEILING METHODE / SALE METHOD



VEILING VIA SALE WEBSITE <http://sale.eurogenes.com>
Of, volg de link via www.eurogenes.nl

TAG + SALE

- > Elk lot begint met een Start Prijs en een Koop Nu prijs
- > De veiling verloopt bij opbod
- > Een bieder heeft de optie om op elk moment van de veiling het lot te kopen voor de Koop Nu prijs. Zodra een lot is verkocht voor de Koop Nu prijs wordt het lot gesloten.

Let op: Zodra u een lot koopt voor de Koop Nu prijs wordt het lot gesloten en is het voor anderen niet meer mogelijk om dit lot te kopen.



SALE THROUGH THE SALE WEBSITE <http://sale.eurogenes.com>
Or, follow the link through www.eurogenes.com

TAG + SALE

- > Each lot has a "Start Price" and a TAG+ "Buy Now" price
- > The sale will run by the system of higher offer / upgoing bids
- > A bidder has the option to buy the lot at any moment for the "Buy Now" price. As soon the lot sold for the "Buy Now" price the lot will be closed

Note: As soon somebody buys a lot for the "Buy Now" price, this item will not available anymore for others to buy.

BEZICHTIGING / VISITS

We bieden de mogelijkheid om op afspraak de dieren te bezichtigen, voor meer informatie informatie of voor het maken van een afspraak kunt u contact opnemen met: Jan Kolff - Tel. 06 53803396 - Email. jankolff@planet.nl

You are welcome for a visit to JK Eder Holsteins and to view the sale animals, for more information or to make an appointment, please contact Jan Kolff - Tel. +31 (0)6 53803396 - Email. jankolff@planet.nl

Address: Oudendijk 75 - 4285 WJ Woudrichem - NL

SALE CONTACTS

NL & Algemeen / General

Jan Kolff	+31 (0)6 53803396	jankolff@planet.nl
Lisa Kolff	+31 (0)6 13743842	lisa_kolff@hotmail.com
Emma Scholten	+31 (0)652897333	escholten@eurogenes.nl
Arjan v.d. Vlis	+31 (0)6 43985150	avdvlis@eurogenes.nl
Jan de Vries	+31 (0)6 26250502	jandevries@diamond-genetics.nl
Hendrik Albada	+31 (0)6 11057874	h.albada@diamond-genetics.nl

DE Nici Nosbisch	+49 (0)1714368388	nici_nosbisch@web.de
DK Martin Rasmussen	+45 (0)28998625	martinfremad@hotmail.com
IE Gareth O'Brien	+353 (0)851539046	obriengarethj@gmail.com
FR Jan van den Oord	+33 (0)679961625	jan.vdo@diamond-genetics.fr
IT Vki Singh	+39 (0)334 303 7095	notorius.vki@icloud.com

TRANSPORT / EXPORT

Wij kunnen assisteren in het transport van uw aankoop, voor vragen neem contact op met:
Jan Kolff - Tel. 06 53803396 - Email. jankolff@planet.nl

We can assist you to coordinate the transport / export of your purchase, please contact us for
more information: Jan Kolff - Tel. +31 (0)6 53803396 - Email. jankolff@planet.nl



JK Eder DG Eliza VG-88-NL VG-89-MS 2yr.
Vaarzenkampioene Hoornaar 2019
3e en in de Finale 6 vaarzen HHH-show 2019

01. JK Eder **HOINE** 4 VG-88-NL VG-89-MS 2yr.

NL 894095807 • 01.07.2017 • Kalf datum: 01.08.2019 • Huidige dagproductie: 36,0 kgM

2.01 305d 10.392kgM 3.81%F 3.25%P (proj) • Geïnsemineerd met BOVA BOMBA op 08.11.2019

IHG MONTANA

(Charley x Yoder x Supersire)

JK Eder Hoine 2 VG-85-NL 2yr.

Conf. VG-85-NL 2yr.

2.03 358d 9.698kgM 4.1% 397F 3.6% 345P
3.04 394d 14.839kgM 3.9% 580F 3.5% 516P

- Donor dam / Stiermoeder
- Daughter of the successfully dtr proven **SPRING** /
Dochter van de succesvolle dochtergeteste stier
SPRING

Westenrade **ALTASPRING**

LJ Uno Hoine NC

Conf. NC

2.09 305d 8.197kgM 4.13% 339F 3.52% 289P
3.11 305d 10.113kgM 4.24% 429F 3.52% 356P

Successful shown at HHH-Show 2019

Succesvol op de HHH-Show 2019

Amighetti **NUMERO UNO**

LJ Explosive VG-86-FR VG-87-MS 2yr.

Conf. VG-86-FR VG-87-MS 2yr.

2.04 305d 13.066kgM 3.3%F 3.2%P

- s. Ensenada Taboo PLANET

Volgende moeders

4. LJ Cigale VG-86-FR VG-88-MS 3yr.
5. LJ Very Best CP-83-FR 2yr.
6. Sister CV VG-89-FR 2yr.
7. Paraffine EX-90-FR
8. Peckenstein Luke Kirsten EX-91-USA GMD DOM
9. Peckenstein Beatrice Kay VG-87-USA GMD DOM

Het totale pakket: show, productie, index en een diepe koefamilie!!
Hoine 4 kreeg de MAX-score als vaars in Nederland van
AB-88-NL 2jr. met een AB-89 uier, was 2de in haar klasse op de
Fokveedag in Hoornaar en is voorspeld in haar eerste lijst met
>10.300kgM met 3.25% eiwit!!

The total package: show, production, index and a deep
pedigree!! Hoine 4 scored the MAX-score for a 2-Yr Old in the
Netherlands with VG-88-NL VG-89-MS 2yr., was 2nd in her
section at the Fokveedag Hoornaar 2019 & is projected with a
first lactation of >10.300kgM with 3.25% Protein!!

JK Eder Hoine 4 VG-88-NL VG-89-MS 2yr. | Zij wordt verkocht!!

2de plaats Fokveedag Hoornaar 2019



3. M. LJ Explosive VG-86-FR VG-87-MS 2yr.



Volle zus van 4. M. LJ Cigale VG-88-FR



Alex Arkink

Christmas @ JK Eder TAG SALE

02. JK Eder **HOINE** 7

NL 627396812 • 01.08.2019

GTPI index (12/19): +2683 GTPI // 861 NM\$ // +2.53 PTAT // >1100 Milk // 0.21%F // 0.03%P

Hurtgenlea Richard **CHARL**

(Charley x Yoder x Supersire)

JK Eder Hoine 4 VG-88-NL VG-89-MS 2yr.

Conf. VG-88-NL VG-89-MS 2yr.

2.01 305d 10.392kgM 3.81%F 3.25%P (proj)

- **2nd place 2-Yr Old Fokveedag Hoornaar 2019** / 2de plaats Fokveedag Hoornaar 2019
- **Interesting sire stack: MONTANA x SPRING** / Interessante vaderlijn: MONTANA x SPRING

IHG MONTANA

JK Eder Hoine 2 VG-85-NL 2yr.

Conf. VG-85-NL 2yr.

2.03 358d 9.698kgM 4.1% 397F 3.6% 345P
3.04 394d 14.839kgM 3.9% 580F 3.5% 516P

- **Donor dam** / Stiermoeder
- **Daughter of the successfully dtr proven SPRING** / Dochter van de succesvolle dochtergeteste stier SPRING

Westenrade **ALTASPRING**

LJ Uno Hoine NC

Conf. NC

2.09 305d 8.197kgM 4.13% 339F 3.52% 289P
3.11 305d 10.113kgM 4.24% 429F 3.52% 356P

- **s. Amighetti NUMERO UNO**

Volgende moeders

4. LJ Explosive VG-86-FR VG-87-MS 2yr.
5. LJ Cigale VG-86-FR VG-88-MS 3yr.
6. LJ Very Best GP-83-FR 2yr.
7. Sister CV VG-89-FR 2yr.
8. Paraffine EX-90-FR
9. Peckenstein Luke Kirsten EX-91-USA GMD DOM
10. Peckenstein Beatrice Kay VG-87-USA GMD DOM

Zij heeft alles waar u naar op zoek bent: een super index, top show pedigree en geweldige producties. Ze noteert +2683 GTPI in combinatie met +2.53 PTAT en 861 NM\$. Een fantastisch kalf van CHARL uit de 2de geplaatste op de Fokveedag Hoornaar 2019: JK Eder Hoine 4 AB-88-NL AB-89 uier 2jr.

She has everything you're looking for: a great index, top show pedigree and huge productions!! Noting +2683 GTPI in combination with +2.53 PTAT and 861 NM\$. An extraordinary heifer sired by CHARL out of the 2nd place 2-Yr Old Fokveedag Hoornaar 2019: JK Eder Hoine 4 VG-88-NL VG-89-MS 2yr.

Moeder: JK Eder Hoine 4 VG-88-NL VG-89-MS 2yr.
2de plaats Fokveedag Hoornaar 2019



4. M. LJ Explosive VG-86-FR VG-87-MS 2yr.



Volle zus van 5. M. LJ Cigale VG-88-FR

03.**JK Eder DG Awesome****ESMERALDA *RC**

NL 627396766 • 10.06.2019

Luck-E Absolute AWESOME-RED

(Absolute-Red x Advent-Red x Kite *RC)

JK DG Esmeralda EX-92-NL EX-94-MS**Conf.** EX-92-NL EX-94-MS2.02 323d 8.888kgM 4.3% 382F 3.5% 311P
3.02 439d 15.325kgM 4.2% 649F 3.6% 550P
4.07 313d 13.160kgM 4.2% 560F 3.3% 437P

- 6th place European Show Libramont '19
- Udder Champion Noordeloos '18
- Res. Champion 2yr. Old National HHH Show '16
- Champion 2yr. Old Dairy Fair Mariënwaerd '16
- Res. Int. Champion Dairy Fair Mariënwaerd '17
- Res. Champion 2yr. Old Hoornaar '16
- 1st Intermediate Class National NRM Show '17

Val-Bisson DOORMAN**Carf Emeraude EX-91-NL****Conf.** EX-91-NL2.03 570d 17.721kgM 3.9% 694F 3.4% 601P
4.00 330d 15.317kgM 3.9% 598F 3.2% 482P
5.06 305d 15.930kgM 3.7% 589F 3.1% 497P

- Champion 2-Yr. Old SPACE 2011
- 1st Jr. 2-Yr. National Show Le Mans 2011
- 6th in the finals at the Nat. NRM Show 2012
- Grand Champion Wintershow West-Brabant 2014

Braedale GOLDWYN**Agathe VG-88-FR****Conf.** VG-88-FR2.03 305d 10.366kgM 3.2% 332F 3.1% 321P
3.06 305d 13.338kgM 3.5% 467F 3.1% 413P

- s. Pictson SHOTTLE
- 3rd Sr. Cow at the Nat. Show Le Mans 2011

Volgende moeders

4. Toulouse VG-89-FR 2yr.
5. Rosière EX-90-FR
6. Menthe VG-89-FR
7. Ixias EX-93-FR
8. Eglantine EX-94-FR

Dromen worden werkelijkheid!! JK DG Esmeralda EX-92-NL haar ROOD FACTOR Awesome dochter wordt verkocht!! Esmeralda was 6de in haar klasse op de Europese show in Libramont dit jaar en wordt elke locatie beter en beter!! Haar moeder Carf Emeraude was Frans Nationaal kampioene als vaars!! Dezelfde familie als Amaraante EX-FR - 2x Franse koe van het jaar.

Dreams are getting true!! JK DG Esmeralda EX-92-NL her RED CARRIER Awesome sells!! Esmeralda was 6th in her section at this years European Show in Libramont and gets better every single year!! Her dam Carf Emeraude was French National Champion as a 2yr. Old!! Same family as Amarante EX-FR - 2 x French Cow of the Year.

Moeder: JK DG Esmeralda EX-92-NL EX-94-MS
6de plaats Europese show Libramont 2019



JK Eder DG Awesome Esmeralda | Zij wordt verkocht!!

Dezelfde familie: Capj Irana
- 1ste @ Europese Show Colmar '16 & Frans Nationaal kampioene

Lianna Kolff

Christmas @ JK Eder TAG SALE

04. 4 FEMALE EMBRYOS

#4 FEMALE Blondin THUNDER STORM x JK DG Esmeralda EX-92-NL EX-94-MS

Method: ET - Grade A - Direct Transfer

Location: The Netherlands

FEMALE Blondin THUNDER STORM

(Jacoby x Beemer x Bolton)

JK DG Esmeralda EX-92-NL EX-94-MS

Conf. EX-92-NL EX-94-MS

2.02 323d 8.888kgM 4.3% 382F 3.5% 311P
3.02 439d 15.325kgM 4.2% 649F 3.6% 550P
4.07 313d 13.160kgM 4.2% 560F 3.3% 437P

- 6th place European Show Libramont '19
- Udder Champion Noordeloos '18
- Res. Champion 2yr. Old National HHH Show '16
- Champion 2yr. Old Dairy Fair Mariënwaerd '16
- Res. Int. Champion Dairy Fair Mariënwaerd '17
- Res. Champion 2yr. Old Hoornaar '16
- 1st Intermediate Class National NRM Show '17

Val-Bisson DOORMAN

Carf Emeraude EX-91-NL

Conf. EX-91-NL

2.03 570d 17.721kgM 3.9% 694F 3.4% 601P
4.00 330d 15.317kgM 3.9% 598F 3.2% 482P
5.06 305d 15.930kgM 3.7% 589F 3.1% 497P

- Champion 2-Yr. Old SPACE 2011
- 1st Jr. 2-Yr. National Show Le Mans 2011
- 6th in the finals at the Nat. NRM Show 2012
- Grand Champion Wintershow West-Brabant 2014

Braedale GOLDWYN

Agathe VG-88-FR

Conf. VG-88-FR

2.03 305d 10.366kgM 3.2% 332F 3.1% 321P
3.06 305d 13.338kgM 3.5% 467F 3.1% 413P

- s. Pictson SHOTTLE
- 3rd Sr. Cow at the Nat. Show Le Mans 2011

Volgende moeders

4. Toulouse VG-89-FR 2yr.
5. Rosière EX-90-FR
6. Menthe VG-89-FR
7. Ixias EX-93-FR
8. Eglantine EX-94-FR

Dit is de kans!! JK DG Esmeralda EX-92-NL haar GESEKSTE Thunder Storm (+4.32 PTAT) embryo's worden verkocht!! Esmeralda was 6de in haar klasse op de Europese show in Libramont dit jaar en wordt elke lacatie beter en beter!! Haar moeder Carf Emeraude was Frans Nationaal kampioene als vaars!! Dezelfde familie als Amaraante EX-FR - 2x Franse koe van het jaar.

Opportunity knocks!! JK DG Esmeralda EX-92-NL her FEMALE Thunder Storm (+4.32 PTAT) are selling!! Esmeralda was 6th in her section at this years European Show in Libramont and gets better every single year!! Her dam Carf Emeraude was French National Champion as a 2yr. Old!! Same family as Amarante EX-FR - 2 x French Cow of the Year.



M. JK DG Esmeralda EX-92-NL EX-94-MS



Dezelfde familie: Capj Irana
- 1ste @ Europese Show Colmar '16 & Frans Nationaal kampioene

Moeder: JK DG Esmeralda EX-92-NL EX-94-MS
6de plaats Europese show Libramont 2019

05. JK Eder DG Udenied **ELICIA**

NL 680096432 • 24.09.2018

GTPI index (12/19): +3.03 PTAT // +1.56 UDC // +1.11 FLC // +286 Milk

Our-Favorite UNDENIED

(Solomon x Atwood x Shottle)

JK Eder DG Elise

Due: / Kalf: december 2019

- **Fancy Brady heifer with +3.26 PTAT (08/19) /** Schitterende Brady pink met +3.26 PTAT (08/19)
- **Maternal sister to:** / Halfzus van JK Eder DG Byway Eliza VG-88-NL 2yr. - vaarzenkampioene Fokveedag Hoornaar 2019
- **Same family as:** / Dezelfde familie als JK DG Esmeralda EX-92-NL EX-94 uier - 6de op de Europese Show Libramont 2019 & Res. 2-Yr Old Champion HHH-Show 2016

Butz-Butler Atwood BRADY

JK Eder DG Elisa VG-87-NL VG-88-MS 2yr.

Conf. VG-87-NL VG-88-MS 2yr.

2.01 305d 8.892kgM 4.4% 391F 3.8% 339P
3.06 305d 11.163kgM 4.8% 535F 3.8% 535P

- **3.8% PROTEIN / 3.8% EIWIT**
- **Halfzus van:** / Maternal sister to DG JK Eder Edrea EX-90-NL EX-91-MS 4yr. - Res. 2-Yr Old Champion Wintershow Noordeloos 2018
- **Great production & transmitting cow /** Geweldige productie en fokkoe

Val-Bisson DOORMAN

JK Eder Emeraude 2 VG-88-NL VG-89-MS 2yr.

Conf. VG-88-NL VG-89-MS 2yr.

2.02 367d 8.504kgM 4.9% 414F 4.0% 338P
3.06 322d 8.649kgM 5.1% 440F 3.9% 340P
4.06 359d 8.051kgM 4.6% 369F 4.0% 320P

- **s. Amighetti NUMERO UNO**
- **Res. Champion 2-Yr. Old & Best Udder Hoornaar '15**
- **Almost 4.0% PROTEIN /** Bijna 4.0% EIWIT!!
- **Sister to:** / Zus van: JK DG Esmeralda EX-92-NL

Volgende moeders

4. Carf Emeraude EX-91-NL
5. Agathe VG-88-FR
6. Toulouse VG-89-FR 2yr.
7. Rosière EX-90-FR
8. Menthe VG-89-FR
9. Ixias EX-93-FR
10. Eglantine EX-94-FR

Prachtige Udenied pink met +3.05 PTAT & spoelklaar! Moeder kalf in december 2019 en is een halfzus van de vaarzenkampioene Fokveedag Hoornaar 2019: JK Eder DG Eliza AB-88-NL 2jr. Het allerbeste wat de Emeraude familie u te bieden heeft!! Uw ticket voor de het 2020 show seizoen!!

Great heifer with +3.05 PTAT by UNDENIED & READY TO FLUSH!! Dam is due December 2019 and a maternal sister to the 2-Yr Old Champion Fokveedag Hoornaar 2019: JK Eder DG Eliza VG-88-NL VG-89-MS 2yr. The best the Emeraude family can offer you!! She is your ticket for the 2020 show season!!



Moeder: JK Eder DG Elise



Halfzus van moeder: JK Eder DG Eliza VG-88-NL 2yr.

4. M. Carf Emeraude EX-91-NL

Frans nationaal kampioene & super fokkoe!!



06. 4 FEMALE EMBRYOS

#4 FEMALE Croteau Lesperron UNIX x Carf Emeraude EX-91 -NL

Method: IVF - Grade A - Direct Transfer

Location: The Netherlands

FEMALE Croteau Lesperron UNIX

(Numero Uno x Domain x Goldwyn)

Carf Emeraude EX-91-NL

Conf. EX-91 -NL EX-91 -MS

2.03 570d 17.721kgM 3.9% 694F 3.4% 601P
4.00 330d 15.317kgM 3.9% 598F 3.2% 482P
5.06 305d 15.930kgM 3.7% 589F 3.1% 497P

- **Champion 2-Yr. Old SPACE 2011**
- **1st Jr. 2-Yr. National Show Le Mans 2011**
- **6th in the finals at the Nat. NRM Show 2012**
- **Grand Champion Wintershow West-Brabant 2014**
- **3rd Sr. Cow at the Nat. Show Le Mans 2011**

Braedale GOLDWYN

Agathe VG-88-FR

Conf. VG-88-FR

2.03 305d 10.366kgM 3.2% 332F 3.1% 321P
3.06 305d 13.338kgM 3.5% 467F 3.1% 413P

Picston SHOTTLE

Toulouse VG-89-FR 2yr.

Conf. VG-89-FR 2yr.

2.02 305d 10.804kgM 4.0% 432F 3.2% 346P
3.11 305d 11.653kgM 4.3% 501F 3.2% 373P

- **Full sister to the proven bull Texas at Genes Diffusion / Volle zus van de dochtergeteste stier Texas bij Genes Diffusion**
- **Maternal sister to Umelin - Dam to the famous Amarante EX-90-FR / Halfzus van Umelin - moeder van de bekende Amarante EX-90-FR**

Volgende moeders

4. Rosière EX-90-FR
5. Menthe VG-89-FR
6. Ixias EX-93-FR
7. Eglantine EX-94-FR

GESEKSTE embryo's van de super dochtergeteste exterieurstier UNIX uit de enige echte Carf Emeraude EX-91 -NL. De kans op een halfzus van JK DG Esmeralda EX-92-NL EX-94 uier!!
Dezelfde familie als Amarante EX-FR - 2x Franse koe van het jaar!!

FEMALE embryos from the huge dtr proven TYPE bull UNIX are selling from the 'one and only' Carf Emeraude EX-91 -NL!!
The chance to create a sister to JK DG Esmeralda EX-92-NL EX-94-MS!! Same family as Amarante EX-FR - 2x French Cow of the Year!!



Halfzus van embryo's: JK DG Esmeralda EX-92-NL



Dezelfde familie: Capj Irana - 1ste @ Colmar '16

M. Carf Emeraude EX-91 -NL

Frans nationaal kampioene & super fokkoe!!



07. JK Eder DG **JOLIEFAILUE** 2 Red

NL 627396937 • 26.09.2019

Cycle McGucci JORDY-RED

(McGucci x Gold Chip x Lion King)

Joliefailue de L'Herbagere VG-88-NL VG-89-MS 2yr.

Conf. VG-88-NL VG-89-MS 2yr.

2.02 420d 9.396kgM 5.0% 471F 3.9% 366P
3.05 424d 11.276kgM 5.6% 625F 4.1% 459P
4.09 305d 9.175kgM 4.91%F 3.96%P (proj)

- Res. Int. Champion R&W Mariënwaerd '18
- 1st & Best Udder & HM Champion between B&W's & GRAND CHAMPION R&W Summershow Libramont '17
- 1st B&W's & GRAND CHAMPION R&W Oudenaarde '17

Future Dream H. AMOR-RED

Failue de L'Herbagere EX-90-BE EX-MS

Conf. EX-90-BE EX-MS

2.06 305d 11.012kgM 4.0% 444F 3.4% 371P
4.05 305d 12.885kgM 4.3% 554F 3.3% 429P
5.09 305d 10.526kgM 4.5% 470F 3.3% 344P

- Grand Champion R&W Int. Show Libramont '14 & '15 & '17
- Grand Champion R&W & Res. Supreme Champion Gistel '15
- Grand Champion R&W National Show Agribex '15

SAVARD-RED

Elue ET de Fastre VG-87-BE

Conf. VG-87-BE

Avg. 4La. 305d 9.328kgM 4.2% 394F 3.5% 322P
7.11 305d 10.670kgM 4.1% 437F 3.5% 368P

- s. Sunnylodge GLACIER-RED
- 2nd Jr. Heifer Inter Farmingtour '08
- Dam to: / Moeder van:
Elisa de L'Herbagere EX-90
- 2nd & UDDER CHAMPION Swiss Expo '11

Volgende moeders

4. Esmeralda Des Grands Trix VG-88-BE
- GRAND CHAMPION R&W National Agribex 2002
- GRAND CHAMPION Prov. Malmedy

Uw ticket voor de show dit prachtige roodbonte JORDY-RED kalf uit de algemeen kampioene zomer show Libramont '17: Joliefailue de L'Herbagere AB-88-NL AB-89 uier 2jr. Diepe Belgische koe familie die terug voert op de algemeen kampioene roodbont van de Agribex 2002: Esmeralda Des Grand Trix AB-88-BE!!

Get in the game with this fancy R&W JORDY-RED heifer from the Grand Champion Summershow Libramont '17: Joliefailue de L'Herbagere VG-88-NL VG-89-MS 2yr. Deep Belgium cow family tracing back to the Grand Champion R&W Agribex 2002: Esmeralda Des Grand Trix VG-88-BE!!

Moeder: Joliefailue de L'Herbagere VG-88-NL VG-89-MS 2yr.
Res Int. Champion R&W Mariënwaerd '18 & more!!



M. Joliefailue de L'Herbagere VG-88-NL VG-89-MS 2yr.



Gr. M: Failue de L'Herbagere EX-90-BE EX-MS

Christmas @ JK Eder TAG SALE

08. 3 FEMALE EMBRYOS

#3 FEMALE Apple-PTS ATTRACTION-RED x Jordy Desire

Method: ET - Grade A - Direct Transfer

Location: The Netherlands

FEMALE Apple-PTS ATTRACTION-RED

(Imac*RC x Regiment-Red x Durham)

Jordy Desire-Red

Due: / Kalft af zomer 2020

- #5 R&W PTAT female in Europe (08/19)
Currently noting +3.47 PTAT (12/19)
- Sister to / Zus van: Destiny Red VG-87-DE:
Reserve Intermediate Champion BZT Show '17 and
2nd RUW Show '17!

Cycle McGucci JORDY-RED

Milksource D Devils Red EX-90-USA

Conf. EX-90-USA

2/1 305d 13.767kgM 4.0% 548F 3.5% 479P

- Dtr of: / Dtr van: Budjon-Nitzzy Destiny Red
EX-94-USA
- Dam to: / Moeder van: Destiny Red VG-87-DE:
Reserve Intermediate Champion BZT Show '17
and 2nd RUW Show '17!

Scientific DESTRY *RC

Budjon-Nitzzy Destiny-Red EX-94-USA 2E

Conf. EX-94-USA 2E

2-03 317d 12.084kgM 3.9% 476F 3.4% 407P
3-02 310d 14.629kgM 3.3% 485F 3.2% 475P
4-03 305d 14.474kgM 3.3% 479F 3.3% 472P

- s. KHW Kite ADVENT-RED
- Unanimous All-American 4-Year-Old 2011
- HM Senior Champion, International R&W Show '11
- Unanimous All-American Jr 3-Year-Old 2010
- Junior Champion, International R&W Show 2008

Volgende moeders

4. Budjon Redmarker Desire *RC EX-96-USA 3E GMD
5. Triple-A Danee EX-92-USA 3E
6. Triple-A Linc Fancy EX-90-USA 2E
7. C Lessia Warden Pre Foxie EX-90-USA

Geweldige SHOW & PTAT embryo's met deze GESEKSTE Attraction-Red (+3.30 PTAT) uit de #5 PTAT ROODBONT van Europa: Jordy Desire. Ze is direct uit 6 EXCELLENTE moeders en voert terug op de Grand Champion World Dairy Expo 2005: Budjon Redmarker Desire EX-96-USA.

Huge SHOW & PTAT embryos with these FEMALE Attraction-Red (+3.30 PTAT) out of the #5 R&W PTAT female in Europe: Jordy Desire. She is straight out 6 EX-dams and traces back to the Grand Champion World Dairy Expo 2005: Budjon Redmarker Desire EX-96-USA.

Donor: Jordy Desire

#5 PTAT roodbont van Europa (08/19) met +3.47 PTAT (12/19)



Moeder: Milksource D Devils Red EX-90-USA



3. Moeder: Budjon Redmarker Desire *RC EX-96-USA 3E GMD
Grand Champion, World Dairy Expo 2005

Christmas @ JK Eder TAG SALE

09. JK Eder Doorman **DARLING** 4 NC

NL 625485118 • 07.10.2017 • Kalf datum: 14.11.2019 • Huidige dagproductie: 31,0 kgM

Val-Bisson DOORMAN

(Bookem x Shottle x Goldwyn)

JK Eder DG Gold Chip Darling EX-90-NL

Conf. EX-90-NL EX-MS 4yr.

2.01 339d 8.401kgM 3.6% 302F 3.3% 277P
4.00 305d 10.362kgM 3.8% 398F 3.2% 329P

- **Champion 2yr. old Mariënwaerd 2014**
- **Full sister to:** / Volle zus van:
DH Gold Chip Darling EX-95-CH
Supreme Champion Swiss Expo 2017
Moeder van Darling (@ Masterrind)

Mr. Chassity GOLD CHIP

Mr. Sam Darling VG-89-NL

Conf. VG-89-NL

2.05 305d 9.810kgM 4.3% 420F 3.3% 325P
4.05 305d 11.554kgM 4.4% 504F 3.2% 370P

- **1st Hamm 2008**
- **Fantastic brood cow** / Fantastische fokkoe

Regancrest-Mr Drham SAM

Meadows-LLC BWM Dancia VG-88-USA

Conf. VG-88-USA

2.07 2x 365d 16.035kgM 3.8% 615F 3.2% 517P

- **s. Mara-Thon BW MARSHALL**

Volgende moeders

4. Regancrest Jolt Diantha VG-87-USA GMD DOM
5. Regancrest Elton Dream VG-86-USA GMD DOM
6. Snow-N Denises Dellia EX-95-USA 2E GMD DOM
7. Snow-N Dorys Denise EX-90-USA 2E GMD DOM

Enmalige mogelijkheid voor u!! Uit DH Gold Chip Darling EX-95-CH haar volle EX-90 zus wordt een verse vaars verkocht van de 'Premier Sire World Dairy Expo 2019': DOORMAN!! Uw kans op de volgende show winnares uit de DARLING koe familie!! Voert terug op de Regancrest Elton Dream, de volle zuster van o.a. DURHAM!

Once in a lifetime opportunity knocks!! From DH Gold Chip Darling EX-95-CH her EX-90 full sister sells a fresh 2-Yr Old from the Premier Sire World Dairy Expo 2019! DOORMAN!! Your chance on a next show winner from the DARLING cow family!! This family traces back to Regancrest Elton Dream, the full sister to DURHAM!!

Volle zus van de moeder: DH Gold Chip Darling EX-95-CH

Supreme Champion Swiss Expo 2017 & Grand Champion Expo Bulle 2018



Volle zus: JK Eder DG Doorman Dance VG-87-NL 2yr.



M. JK Eder DG Gold Chip Darling EX-90-NL



10. JK Eder DG **DANCE** 2

NL 627396773 • 13.05.2019

Croteau Lesperron **UNIX**

(Uno x Domain x Goldwyn)

JK Eder DG Doorman Dance VG-87-NL 2yr.

Conf. VG-87-NL 2yr.

2.02 361d 7.870kgM 4.9% 388F 3.9% 309F

- **DOORMAN x GOLD CHIP**



JK Eder DG Dance 2 | Zij wordt verkocht!!

Val-Bisson **DOORMAN**

JK Eder DG Gold Chip Darling EX-90-NL

Conf. EX-90-NL EX-MS 4yr.

2.01 339d 8.401kgM 3.6% 302F 3.3% 277P
4.00 305d 10.362kgM 3.8% 398F 3.2% 329P

- **Champion 2yr. old Mariënwaerd 2014**
- **Full sister to:** / Volle zus van:
DH Gold Chip Darling EX-95-CH
Supreme Champion Swiss Expo 2017
Moeder van Darlingo (@ Masterrind)

Mr. Chassity **GOLD CHIP**

Mr. Sam Darling VG-89-NL

Conf. VG-89-NL

2.05 305d 9.810kgM 4.3% 420F 3.3% 325P
4.05 305d 11.554kgM 4.4% 504F 3.2% 370P

- **s. Regancrest-Mr Drham SAM**
- **1st Hamm 2008**
- **Fantastic brood cow / Fantastische fokkoe**

Volgende moeders

4. Meadows-LLC BWM Dancia VG-88-USA
5. Regancrest Jolt Diantha VG-87-USA GMD DOM
6. Regancrest Elton Dream VG-86-USA GMD DOM
7. Snow-N Denises Dellia EX-95-USA 2E GMD DOM
8. Snow-N Dorys Denise EX-90-USA 2E GMD DOM

Droom afstamming: UNIX x DOORMAN x GOLD CHIP x MR. SAM! Het allerbeste uit de DARLING koefamilie, grootmoeder is de excellente volle zuster van de Swiss Expo Supreme Champion van 2017! Voert terug op de Regancrest Elton Dream, de volle zuster van o.a. DURHAM!

Dream pedigree: UNIX x DOORMAN x GOLD CHIP x MR. SAM! The very best from the DARLING cow family, grand dam is the EXCELLENT full sister to the Swiss Expo Supreme Champion of 2017. Goes back on Elton Dream, the full sister of the legendary Regancrest Elton DURHAM!

Volle zus van grootmoeder: DH Gold Chip Darling EX-95-CH
Supreme Champion Swiss Expo 2017 & Grand Champion Expo Bulle 2018



M. JK Eder DG Doorman Dance VG-87-NL 2yr.



Gr. M. JK Eder DG Gold Chip Darling EX-90-NL



Christmas @ JK Eder TAG SALE

II. 5 FEMALE EMBRYOS

#5 FEMALE COL DG CRUSHTIME x JK Eder DG Doorman Dance VG-87-NL 2yr.

Method: ET - Grade A - Direct Transfer

Location: The Netherlands

FEMALE Col DG CRUSHTIME

(Crush x Mogul x Meridian)

JK Eder DG Doorman Dance VG-87-NL 2yr.

Conf. VG-87-NL 2yr.

2.02 361d 7.870kgM 4.9% 388F 3.9% 309F

- DOORMAN x GOLD CHIP

Val-Bisson DOORMAN

JK Eder DG Gold Chip Darling EX-90-NL

Conf. EX-90-NL EX-MS 4yr.

2.01 339d 8.401kgM 3.6% 302F 3.3% 277P
4.00 305d 10.362kgM 3.8% 398F 3.2% 329P

- **Champion 2yr. old Mariënwaerd 2014**
- **Full sister to:** / Volle zus van:
DH Gold Chip Darling EX-95-CH
Supreme Champion Swiss Expo 2017
Moeder van Darlingo (@ Masterrind)

Mr. Chassity GOLD CHIP

Mr. Sam Darling VG-89-NL

Conf. VG-89-NL

2.05 305d 9.810kgM 4.3% 420F 3.3% 325P
4.05 305d 11.554kgM 4.4% 504F 3.2% 370P

- **s. Regancrest-Mr Drham SAM**
- **1st Hamm 2008**
- **Fantastic brood cow / Fantastische fokkoe**

Volgende moeders

4. Meadows-LLC BWM Dancia VG-88-USA
5. Regancrest Jolt Diantha VG-87-USA GMD DOM
6. Regancrest Elton Dream VG-86-USA GMD DOM
7. Snow-N Denises Dellia EX-95-USA 2E GMD DOM
8. Snow-N Dorys Denise EX-90-USA 2E GMD DOM

Vrouwelijke embryo's van de top exterieur stier COL DG CRUSHTIME - +3.84 PTAT. Het allerbeste uit de DARLING koefamilie, grootmoeder is de excellente volle zuster van de Swiss Expo Supreme Champion van 2017! Voert terug op de Regancrest Elton Dream, de volle zuster van o.a. DURHAM!

FEMALE embryos by the TYPE leading COL DG CRUSHTIME - +3.84 PTAT. The very best from the DARLING cow family, grand dam is the EXCELLENT full sister to the Swiss Expo Supreme Champion of 2017. Goes back on Elton Dream, the full sister of the legendary Regancrest Elton DURHAM!

Volle zus van grootmoeder: DH Gold Chip Darling EX-95-CH
Supreme Champion Swiss Expo 2017 & Grand Champion Expo Bulle 2018



M. JK Eder DG Doorman Dance VG-87-NL 2yr.



Gr. M. JK Eder DG Gold Chip Darling EX-90-NL



Christmas @ JK Eder TAG SALE

12. JK Eder DG **ELIZA** 2

NL 627396797 • 23.07.2019

Peak **CHUCK**

(Supershot x Ransom x Robust)

JK Eder DG Byway Eliza VG-88-NL 2yr.

Conf. VG-88-NL VG-89-MS 2yr.

Just fresh: 2nd test 34.3kgM 3.71%F 3.43%P
La1 305d 9.899kgM 4.0%F 3.5%P (proj)

- **3rd place and at final 6 HHH-Show 2019** / 3rde plaats en bij laatste 6 HHH-Show 2019
- **2yr. Old Champion Hoornaar 2019**
- **Top ranking PTAT cow in Europe (>2yr), PTAT +3.23 with >650 Milk, good health traits & <8 SCE / Top PTAT koe in Europa (>2jr), PTAT +3.23 met >650 melk en super gezondheidskenmerken**

OH-River-Syc **BYWAY**

JK Eder DG Elisa VG-87-NL VG-88-MS 2yr.

Conf. VG-87-NL VG-88-MS 2yr.

2.01 305d 8.892kgM 4.4% 391F 3.8% 339P
3.06 305d 11.163kgM 4.8% 535F 3.8% 535P

- **3.8% PROTEIN** / 3.8% EIWIT
- **Halfzus van:** / Maternal sister to DG JK Eder Edrea EX-90-NL EX-91-MS 4yr. - Res. 2-Yr Old Champion Wintershow Noordeloos 2018
- **Great production & transmitting cow** / Geweldige productie en fokkoe

Val-Bisson **DOORMAN**

JK Eder Emeraude 2 VG-88-NL VG-89-MS 2yr.

Conf. VG-88-NL VG-89-MS 2yr.

2.02 367d 8.504kgM 4.9% 414F 4.0% 338P
3.06 322d 8.649kgM 5.1% 440F 3.9% 340P
4.06 359d 8.051kgM 4.6% 369F 4.0% 320P

- **s. Amighetti NUMERO UNO**
- **Res. Champion 2-Yr. Old & Best Udder Hoornaar '15**
- **Almost 4.0% PROTEIN** / Bijna 4.0% EIWIT!!
- **Sister to:** / Zus van: JK DG Esmeralda EX-92-NL

Volgende moeders

4. Carf Emeraude EX-91-NL
5. Agathe VG-88-FR
6. Toulouse VG-89-FR 2yr.
7. Rosière EX-90-FR
8. Menthe VG-89-FR
9. Ixias EX-93-FR
10. Eglantine EX-94-FR

Unieke mogelijkheid!! Een directe dochter van de vaarzenkampioene Fokveedag Hoornaar 2019 wordt verkocht!! Een diepe Franse koe familie die terug voert of de fameuze fokkoe Carf Emeraude EX-91-NL. Dezelfde familie als Capj Irana - 1ste op de Europese Show in Colmar 2016 en Frans Nationaal kampioene.

Amazing opportunity!! A direct daughter of the 2-Yr Old Champion Fokveedag Hoornaar 2019 sells!! Deep French cow family tracing back to the breeding phenomenon Carf Emeraude EX-91-NL. The same family as Capj Irana - 1st @ European Show Colmar '16 & French National Champion.

Moeder: JK Eder DG Byway Eliza VG-88-NL VG-89-MS 2yr.
Vaarzenkampioene Fokveedag Hoornaar 2019



4. M. Carf Emeraude EX-91-NL



Gr. M: JK Eder Elisa VG-87-NL VG-88-MS 2yr.



Christmas @ JK Eder TAG SALE

13. 4 FEMALE EMBRYOS

#4 FEMALE Blondin THUNDER STORM x JK Eder DG Byway Eliza VG-88-NL VG-89-MS 2yr.

Method: ET - Grade A - Direct Transfer

Location: The Netherlands

FEMALE Blondin THUNDER STORM

(Jacoby x Beemer x Bolton)

JK Eder DG Byway Eliza VG-88-NL 2yr.

Conf. VG-88-NL VG-89-MS 2yr.

Just fresh: 2nd test 34.3kgM 3.71%F 3.43%P
La1 305d 9.899kgM 4.0%F 3.5%P (proj)

- 3rd place and at final 6 HHH-Show 2019 / 3de plaats en bij laatste 6 HHH-Show 2019
- 2yr. Old Champion Hoornaar 2019
- Top ranking PTAT cow in Europe (>2yr), PTAT +3.23 with >650 Milk, good health traits & <8 SCE / Top PTAT koe in Europa (>2jr), PTAT +3.23 met >650 melk en super gezondheidskenmerken

OH-River-Syc BYWAY

JK Eder DG Elisa VG-87-NL VG-88-MS 2yr.

Conf. VG-87-NL VG-88-MS 2yr.

2.01 305d 8.892kgM 4.4% 391F 3.8% 339P
3.06 305d 11.163kgM 4.8% 535F 3.8% 535P

- 3.8% PROTEIN / 3.8% EIWIT
- Halfzus van: / Maternal sister to DG JK Eder Edrea EX-90-NL EX-91-MS 4yr. - Res. 2-Yr Old Champion Wintershow Noordeloos 2018
- Great production & transmitting cow / Geweldige productie en fokkoe

Val-Bisson DOORMAN

JK Eder Emeraude 2 VG-88-NL VG-89-MS 2yr.

Conf. VG-88-NL VG-89-MS 2yr.

2.02 367d 8.504kgM 4.9% 414F 4.0% 338P
3.06 322d 8.649kgM 5.1% 440F 3.9% 340P
4.06 359d 8.051kgM 4.6% 369F 4.0% 320P

- s. Amighetti NUMERO UNO
- Res. Champion 2-Yr. Old & Best Udder Hoornaar '15
- Almost 4.0% PROTEIN / Bijna 4.0% EIWIT!!
- Sister to: / Zus van: JK DG Esmeralda EX-92-NL

Volgende moeders

4. Carf Emeraude EX-91-NL
5. Agathe VG-88-FR
6. Toulouse VG-89-FR 2yr.
7. Rosière EX-90-FR
8. Menthe VG-89-FR
9. Ixias EX-93-FR
10. Eglantine EX-94-FR

GESEKSTE embryo's van de SHOW stier: Blondin THUNDER STORM (+4.34 PTAT) direct uit de vaarzenkampioene Fokveedag Hoornaar 2019: JK Eder DG Byway Eliza AB-88-NL 2jr. Terug voerend op de Franse nationale kampioene en meervoudig show winnares: Carf Emeraude EX-91-NL.

FEMALE embryos by the SHOW bull: Blondin THUNDER STORM (+4.34 PTAT) straight out the 2-Yr Old Champion Fokveedag Hoornaar 2019: JK Eder DG Byway Eliza VG-88-NL 2yr. Tracing back to the French National Champion and multiple show winner: Carf Emeraude EX-91-NL.

Donor: JK Eder DG Byway Eliza VG-88-NL VG-89-MS 2yr.
Vaarzenkampioene Fokveedag Hoornaar 2019



4. M. Carf Emeraude EX-91-NL



Gr. M: JK Eder Elisa VG-87-NL VG-88-MS 2yr.

Alex Arkink

Christmas @ JK Eder TAG SALE

14. JK Eder DG **EDREA** 2

BE 918081901 • 10.01.2019

GTPi index (12/19): +2.60 PTAT // +2.30 UDC // +782 Milk // 2.90 SCS

Stantons **HIGH OCTANE**

(McCutchen x Observer x Shottle)

DG JK Eder Edrea EX-90-NL EX-91-MS 4yr.

Conf. EX-90-NL EX-91-MS 4yr.

2.02 330d 9.279kgM 4.2% 393F 3.4% 315P
3.02 329d 12.630kgM 4.1% 514F 3.5% 435P
4.03 305d 11.722kgM 4.28%F 3.72%P (proj)

- **Res. 2-Yr Old Champion Wintershow Noordeloos 2018** / Reserve kampioene vaarzen Wintershow Noordeloos 2018
- **Emeraude's latest EX-descendant!** / Emeraude's laatste EX-nakomeling!

Larcrest **COMMANDER**

JK Eder Emeraude 2 VG-88-NL VG-89-MS 2yr.

Conf. VG-88-NL VG-89-MS 2yr.

2.02 367d 8.504kgM 4.9% 414F 4.0% 338P
3.06 322d 8.649kgM 5.1% 440F 3.9% 340P
4.06 359d 8.051kgM 4.6% 369F 4.0% 320P

- **Res. Champion 2-Yr. Old & Best Udder Hoornaar '15**
- **Almost 4.0% PROTEIN** / Bijna 4.0% EIWIT!!
- **Sister to:** / Zus van: JK DG Esmeralda EX-92-NL

Amighetti **NUMERO UNO**

Carf Emeraude EX-91-NL

Conf. EX-91-NL

2.03 570d 17.721kgM 3.9% 694F 3.4% 601P
4.00 330d 15.317kgM 3.9% 598F 3.2% 482P
5.06 305d 15.930kgM 3.7% 589F 3.1% 497P

- **s. Braedale GOLDWYN**
- **Champion 2-Yr. Old SPACE 2011**
- **1st Jr. 2-Yr. National Show Le Mans 2011**
- **6th in the finals at the Nat. NRM Show 2012**
- **Grand Champion Wintershow West-Brabant 2014**

Volgende moeders

4. Agathe VG-88-FR
5. Toulouse VG-89-FR 2yr.
6. Rosière EX-90-FR
7. Menthe VG-89-FR
8. Ixias EX-93-FR
9. Eglantine EX-94-FR

BIG TIME show mogelijkheid!! Uit Emeraude haar meest recente EX-nakomeling DG JK Eder Edrea EX-90-NL EX-91 uier 4jr. wordt een show pink van de sensatie High Octane aangeboden!! De eerste drie generaties in deze lijn gingen er allemaal met het zegelint vandoor op Nationale en Regionale keuringen!! Wat een geweldig aanbod! Klaar voor strijd!

BIG TIME show opportunity!! From Emeraude her latest EX-descendant DG JK Eder Edrea EX-90-NL EX-91-MS 4yr. is selling a High Octane show heifer!! First three generations were all Champions at National & Regional show!! What a fabulous offer!! Ready to rumble!

Moeder: DG JK Eder Edrea EX-90-NL EX-91-MS 4yr.
Reserve kampioene vaarzen Wintershow Noordeloos 2018



Gr. Moeder: JK Eder Emeraude 2 VG-88-NL 2yr.



Dezelfde familie: Amarante EX-FR
2x Franse koe van het jaar

— Alger Meekma

Christmas @ JK Eder TAG SALE

15. JK Eder DG Jacoby **SONJA**

NL 680096526 • 26.11.2018

Cycle Doorman JACOBY

(Doorman x Gold Chip x Lion King *RC)

JK Eder DG High Octane Sonja VG-87-NL 2yr.

Conf. VG-87-NL VG-MS 2yr.

2.00 347d 10.871kgM 4.2% 452F 3.3% 361P

- **Show sire stack: High Octane x Baxter x Goldwyn /** Show vaderlijn: High Octane x Baxter x Goldwyn
- **Sister to: JK Eder Silvy 1 former #2 gRZG Shamrock-daughter in Germany /** Zus van JK Eder Silvy 1, voormalig #2 gRZG Shamrock dochter in Duitsland.

Stantons HIGH OCTANE

All.Nure Baxter Silvy EX-90-NL EX-MS 5yr.

Conf. EX-90-NL EX-MS 5yr.

2.00 305d 12.718kgM 3.8% 483F 3.2% 402P
5.04 305d 12.591kgM 3.9% 491F 2.9% 365P
7.00 542d 20.999kgM 3.9% 817F 3.3% 690P
8.08 305d 12.803kgM 2.74%F 3.05%P (proj)

- **Former #1 GTPI Cow in Europe!! /** Voormalig #1 GTPI koe van Europa
- **Snowman daughter was Champion Best Udder 2-Yr. Old Cremona '13 /** Snowman dochter was Uier kampioene bij de vaarzen op de Nationale Show in Cremona '13

Emerald-Acr-Sa T-BAXTER

La Felce Seretta EX-91-IT

Conf. EX-91-IT

1.11 305d 13.843kgM 3.5% 485F 3.3% 461P
3.05 305d 10.223kgM 3.4% 348F 3.1% 316P
7.05 305d 17.145kgM 3.9% 674F 3.1% 523P

- **s. Braedale GOLDWYN**
- **Family of: /** De familie van Ashlar @ Semex

Volgende moeders

4. Aurora Nesta EX-91-IT
5. Morningview Bellwood July GP-USA
6. Morningview Converse Judy EX-93-USA GMD DOM
7. Morningview Aerostar Jix VG-87-USA
8. Walnutt Knoll Judy VG-87-USA GMD DOM
9. Walnutt-Knoll Rorae Jenny EX-91-USA GMD DOM

Showrijke klein dochter van JACOBY uit de voormalig #1 GTPI van Europa en EXCELLENTE: All.Nure Baxter Silvy EX-90-NL. Diepe Amerikaanse koe familie terugvoerend op Morningview Converse Judy EX-93-USA. Moeder is een beloftevolle vaars van High Octane, ingeschreven met AB-87 2jr. en >10.800kgM in haar eerste lijst als vaars.

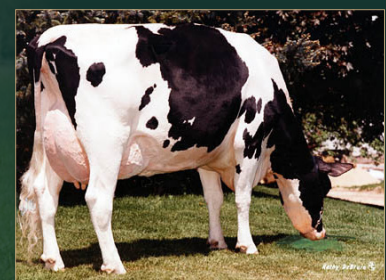
Showy grand daughter by JACOBY from the former #1 GTPI in Europe & EXCELLENT: All.Nure Baxter Silvy EX-90-NL!! Deep American pedigree tracing back to Morningview Converse Judy EX-93-USA. Dam is a promising 2yr. Old by High Octane scored with VG-87 2yr. and produced >10.800kgM in her 1st lactation.

Gr. Moeder: All. Nure Baxter Silvy *CV EX-90-NL EX-MS 5yr.

Voormalig #1 GTPI koe van Europa



Bookem zus van moeder: JK Eder DG Sky *CV VG-85-NL 2yr.



Stammoeder: Morningview Converse Judy EX-93-USA GMD DOM

Christmas @ JK Eder TAG SALE

Alex Arkink

16. JK Eder SILVESTER 2

NL 680096230 • 13.08.2018

Geïnsemineerd met KING DOC op 17-09-2019

DRACHTIG / PREGNANT

GTPI index (12/19): +2419 GTPI // 626 NM\$ // +1.67 PTAT // +0.17% Fat // +0.06% Protein

DG Albero ELDORADO

(Montross x Supersire x Man-O-Man)

JK Eder DG Silvester VG-89-NL 3yr.

Conf. VG-89-NL VG-89-MS 3yr.

2.05 331d 9.131kgM 4.8% 435F 3.8% 343P
3.06 305d 9.587kgM 4.77%F 3.96%P (proj)

- Entered for the HHH-Show 2019 / Aangemeld voor de HHH-Show 2019
- Projected with 4.0% PROTEIN / Voorspelt met 4.0% EIWIT

Seagull-Bay SILVER

JK Eder DG Silly I VG-86-NL VG-87-MS 3yr.

Conf. VG-86-NL VG-87-MS 3yr.

2.08 450d 14.028kgM 4.3% 608F 3.7% 516P
4.00 520d 18.709kgM 4.4% 818F 3.8% 704P

- Full brother sold for 44.000 EUR / Volle broer verkocht voor 44.000 EUR

Mr Welcome Hill TANGO

JK Eder DG Silly VG-85-NL VG-85-MS

Conf. VG-85-NL VG-85-MS

2.05 517d 12.679kgM 4.3% 547F 3.7% 474P
5.01 472d 1 6.311kgM 4.1% 670F 3.6% 593P
6.06 443d 13.242kgM 4.4% 577F 3.8% 500P

- s. De-Su 521 BOOKEM
- Former top 20 GTPI cow in Europe / Voormalig top 20 GTPI koe in Europa
- Dam to: / Moeder van Seducer & Season @ Semex & Sullivan @ AI-Total

Volgende moeders

4. All.Nure Baxter Silvy *CV EX-90-NL EX-MS 5yr.
5. La Felce Seretta EX-91-IT
6. Aurora Nesta EX-91-IT
7. Morningview Aerostar Jix VG-87-USA
8. Morningview Bellwood July CP-USA
9. Morningview Converse Judy EX-93-USA GMD DOM

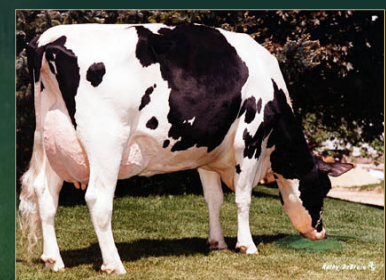
+2452 GTPI & +653 NM\$ ELDORADO dochter van de AB-89-NL Silver dtr JK Eder DG Silvester!! Volle broer van de grootmoeder is verkocht voor 44.000 EUR. 3rde moeder is de voormalige #1 GTPI koe van Europa: All.Nure Baxter Silvy *CV EX-90-NL 5jr. Diepe Noord-Amerikaanse koe familie die terugvoert op Morningview Converse Judy EX-93-USA GMD DOM.

+2452 GTPI & +653 NM\$ ELDORADO daughter of the VG-89-NL Silver dtr JK Eder DG Silvester!! Full brother to grand dam sold for 44.000 EUR. 3rd dam is the former #1 GTPI cow in Europe: All.Nure Baxter Silvy *CV EX-90-NL 5yr. Deep North-American cow family tracing back to Morningview Converse Judy EX-93-USA GMD DOM.

4de Moeder: All. Nure Baxter Silvy *CV EX-90-NL EX-MS 5yr.
Voormalig #1 GTPI koe van Europa



3. M. JK Eder DG Silly VG-85-NL VG-85-MS
Voormalig top 20 GTPI koe in Europa



Stammoeder: Morningview Converse Judy EX-93-USA GMD DOM

Christmas @ JK Eder TAG SALE

Alex Art

17. JK Eder DG Sillian **SILLY** 11

NL 680096386 • 05.08.2018

Dukefarm SILLIAN

(Silver x Meridian x Freddie)

JK Eder DG Silly VG-85-NL VG-85-MS 2yr.

Conf. VG-85-NL VG-85-MS 2yr.

2.05 517d 12.679kgM 4.3% 547F 3.7% 474P
4.00 339d 9.031kgM 4.1% 374F 3.7% 335P
5.01 472d 16.311kgM 4.1% 670F 3.6% 593P
6.06 443d 13.242kgM 4.4% 577F 3.8% 500P

- VG Bookem daughter of Baxter SILVY / AB Bookem dochter van Baxter SILVY
- Sister to: JK Eder Silvy 1 former #2 gRZG Shamrock-daughter in Germany / Zus van JK Eder Silvy 1, voormalig #2 gRZG Shamrock dochter in Duitsland.

De-Su 521 BOOKEM

All.Nure Baxter Silvy EX-90-NL EX-MS 5yr.

Conf. EX-90-NL EX-MS 5yr.

2.00 305d 12.718kgM 3.8% 483F 3.2% 402P
5.04 305d 12.591kgM 3.9% 491F 2.9% 365P
7.00 542d 20.999kgM 3.9% 817F 3.3% 690P
8.08 305d 12.803kgM 2.74%F 3.05%P (proj)

- Former #1 GTPI Cow in Europe!! / Voormalig #1 GTPI koe van Europa
- Snowman daughter was Champion Best Udder 2-Yr. Old Cremona '13 / Snowman dochter was Uier kampioene bij de vaarzen op de Nationale Show in Cremona '13

Emerald-Acr-Sa T-BAXTER

La Felce Seretta EX-91-IT

Conf. EX-91-IT

1.11 305d 13.843kgM 3.5% 485F 3.3% 461P
3.05 305d 10.223kgM 3.4% 348F 3.1% 316P
7.05 305d 17.145kgM 3.9% 674F 3.1% 523P

- s. Braedale GOLDWYN
- Family of: / De familie van Ashlar @ Semex

Volgende moeders

4. Aurora Nesta EX-91-IT
5. Morningview Bellwood July GP-USA
6. Morningview Converse Judy EX-93-USA GMD DOM
7. Morningview Aerostar Jix VG-87-USA
8. Walnutt Knoll Judy VG-87-USA GMD DOM
9. Walnutt-Knoll Rorae Jenny EX-91-USA GMD DOM

Dukefarm SILLIAN kleindochter van de voormalig #1 GTPI koe van Europa & EX-Baxter dochter: All.Nure Baxter Silvy EX-90-NL. Pink die klaar is om te spoelen & showen. Diepe Noord-Amerikaanse koe familie die terugvoert op Morningview Converse Judy EX-93-USA GMD DOM.

Dukefarm SILLIAN grand daughter to the former #1 GTPI cow in Europe and EX-Baxter daughter: All.Nure Baxter Silvy EX-90-NL! Heifer which is READY to SHOW & FLUSH!! From origin deep American cow family tracing back to Morningview Converse Judy EX-93-USA GMD DOM.

Gr. Moeder: All. Nure Baxter Silvy *CV EX-90-NL EX-MS 5yr.

Voormalig #1 GTPI koe van Europa



Volle zus van de moeder: JK Eder DG Sky *CV VG-85-NL 2yr.



Stammoeder: Morningview Converse Judy EX-93-USA GMD DOM

Christmas @ JK Eder TAG SALE

Alex Arkink

18. WIT DAFNE EX-91-DE

DE 0537085022 • 09.08.2011 • Sells open and ready to FLUSH!! / Wordt spoelklaar verkocht!!

4/4La 305d 7.817kgM 5.2% 403F 4.0% 312P
HL2 305d 8.541kgM 5.3% 456F 4.0% 341P

Lencrest BLACKSTONE

(Parade x Declo)

WIT Dalia EX-92-DE

Conf. EX-92-DE

6/5La 305d 6.819kgM 5.9% 403F 4.2% 289P
HL5 305d 7.892kgM 5.9% 468F 4.2% 329P

- Grand Champion Jersey RUW-Show '11 / Algemeen kampioene JERSEY RUW-Show 2011
- Calved 7 times!! / 7 keer afgekalfd

Q ZIK

WIT Dagmar EX-90-DE

Conf. EX-90-DE

4/3La 305d 6.656kgM 5.3% 354F 4.2% 276P
HL3 305d 7.598kgM 5.3% 399F 4.2% 322P

- Grand Champion Jersey RUW-Show '09 / Algemeen kampioene JERSEY RUW-Show 2009

Rock Ella PARAMOUNT

Eike

Conf. NC

3/2La 305d 5.212kgM 6.2% 321F 4.4% 231P
HL2 305d 6.143kgM 6.2% 381F 4.7% 286P

- s. Fyn Danroy

+2452 GTPI & +653 NM\$ ELDORADO dochter van de AB-89-NL Silver dtr JK Eder DG Silvester!! Volle broer van de grootmoeder is verkocht voor 44.000 EUR. 3rde moeder is de voormalige #1 GTPI koe van Europa: All.Nure Baxter Silvy *CV EX-90-NL 5jr. Diepe Noord-Amerikaanse koe familie die terugvoert op Morningview Converse Judy EX-93-USA GMD DOM.

+2452 GTPI & +653 NM\$ ELDORADO daughter of the VG-89-NL Silver dtr JK Eder DG Silvester!! Full brother to grand dam sold for 44.000 EUR. 3rd dam is the former #1 GTPI cow in Europe: All.Nure Baxter Silvy *CV EX-90-NL 5yr. Deep North-American cow family tracing back to Morningview Converse Judy EX-93-USA GMD DOM.

WIT Dafne EX-91-DE

Zij wordt verkocht!!



Moeder: WIT Dalia EX-92-DE
Algemeen kampioene JERSEY RUW-Show 2011

19. 4 FEMALE EMBRYOS

#4 FEMALE Valley Cece CHROME / Elliotts Regency CASINO x Arethusa NH DG Victoria Secret VG-85-DE 2yr.

Method: ET - Grade A - Direct Transfer

Location: Germany

FEMALE Valley Cece CHROME (+2.80 PTAT)

FEMALE Elliotts Regency CASINO (+2.30 PTAT)

Arethusa NH DG Victoria Secret VG-85-DE 2yr.

Conf. VG-85-DE 2yr.

La1 305d 5.593kgM 5.6%F 4.3%P (proj)

- **JERSEY 2yr. Old Champion GDS Show 2019 /** JERSEY vaarzenkampioene German Dairy Show '19
- **Fancy show cow with 7 EXCELLENT dams in her pedigree /** Schitterende show koe met 7 EXCELLENTE moeders in haar pedigree

Hawarden Impuls PREMIER

Arethusa Veronicas Comet EX-95-USA

Conf. EX-95-USA

- 3.07 305d 8.227kgM 6.0% 494F 3.8% 314P
- 4.06 305d 9.077kgM 6.5% 590F 3.7% 336P
- 7.05 305d 8.741kgM 5.5% 481F 3.4% 297P
- **GRAND CHAMPION Royal Winter Fair '10**
- **6 x All-American Nomination!!**
- **Grand Champion NY Spring '11**
- **Res. Grand Royal Winter Fair '09**
- **Maternal sister to: / Half zus van:**
Arethusa Response Viviv EX-95
- Supreme Champion Royal '12 & '14

Piedmont Nadine FUROR

Huronia Centurion Veronica EX-97-USA

Conf. EX-97-USA

2.00 334d 8.857kgM 5.5% 480F 4.1% 347P
2.11 365d 11.710kgM 5.1% 577F 4.1% 478P
4.09 365d 11.144kgM 5.6% 635F 4.0% 443P
6.08 365d 11.087kgM 5.6% 650F 3.6% 433P
8.06 365d 9.852kgM 5.7% 1239 3.9% 387P

- **s. Sooner CENTURION**
- **SUPREME CHAMPION, World Dairy Expo 2006 & GRAND '04, '05 & '06**
- **Res. Grand Champion, World Dairy Expo 2002, 2007**

Volgende moeders

4. Genesis Renaissance Vivianne VG-87-CAN
5. Genesis Juno Virginia EX-91-CAN 4E
6. Swissbell F Veronica SUP EX *1
7. Swissbell Ella Virginia EX-90
8. Swissbell Virginia SUP EX-90
9. Belmont Jester Virginia SUP EX

GESEKSTE Jersey 'show' embryo's van de top exterieurstieren CHROME en CASINO in een gecombineerde spoeling uit de vaarzenkampioene JERSEY German Dairy Show '19: Arethusa NH DG Victoria Secret AB-85-DE 2jr. Zij is een kleindochter van de legendarische Huronia Centurion Veronica EX-97-USA.

FEMALE JERSEY 'type' embryos by the show bulls CHROME and CASINO in a mixed flush from the 2-Yr Old Champion German Dairy Show 2019: Arethusa NH DG Victoria Secret VG-85-DE 2yr. She is a grand dtr to the legend Huronia Centurion Veronica EX-97-USA.

M. Arethusa Veronicas Comet EX-95-USA

Grand Champion Royal Winter Fair 2010



Donor: Arethusa NH DG Victoria Secret VG-85-DE 2yr.



Gr. M. Huronia Centurion Veronica EX-97-USA



© Cybil Fisher

Christmas @ JK Eder TAG SALE

20. JK Eder Sillian **JACEY**

NL 680096317 • 26.06.2018

Geïnsemineerd met KING DOC op 27-09-2019
DRACHTIG / PREGNANT

Dukefarm SILLIAN

(Silver x Meridian x Freddie)

JK Eder Freddie Isabella VG-86-NL 2yr.

Conf. VG-86-NL VG-87-MS 2yr.

2.03 300d 7.479kgM 4.9% 363F 3.6% 269P
3.03 349d 10.922kgM 4.7% 509F 3.5% 381P
4.04 307d 11.104kgM 4.5% 500F 3.4% 376P
5.03 305d 11.545kgM 4.60%F 3.62%P (proj)

- **1st place Fokveedag Hoornaar 2016** / 1ste plaats Fokveedag Hoornaar 2016
- **Interesting sire stack: GALAXY x SHAMROCK** / Interessante vaderlijn: GALAXY x SHAMROCK
- **Same family as the legendary O-MAN** / Dezelfde familie als de legendarische O-MAN
- **Same family as Paeßens Jezebel sold for 44.000 EUR @ European Masters Sale 2019** / Dezelfde familie als Paeßens Jezebel verkocht voor 44.000 EUR @ European Masters Sale 2019

De-Su Freddie GALAXY

JK Eder Ina I VG-85-NL 2yr.

Conf. VG-85-NL VG-86-MS 2yr.

2.06 370d 10.822kgM 4.4% 471F 3.3% 354P
4.08 419d 17.415kgM 4.1% 712F 3.2% 564P
5.11 341d 13.743kgM 4.1% 558F 3.2% 433P
6.11 285d 11.534kgM 3.9% 455F 3.0% 351P

- **WORLD CLASS outcross pedigree** / Wereldklasse outcross pedigree

Ladys-Manor PL SHAMROCK

O-Beejetstr Ina VG-87-NL VG-87-MS 2yr.

Conf. VG-87-NL VG-87-MS 2yr.

2.00 305d 10.587kgM 4.1% 430F 3.1% 329P
4.09 305d 15.535kgM 3.7% 575F 2.9% 450P

- **s. Applouis JET STREAM**
- **Dutch Topseller of '11 for 44.000 EUR** / Nederlandse veilingtopper in 2011 voor 44.000 EUR
- **Fantastic brood cow** / Fantastische fokkoe

Volgende moeders

4. O-Bee Titanic Ilsa EX-90-USA DOM
5. O-Bee BW Marshall Ida EX-90-USA GMD DOM
6. O-Bee Terry Judy VG-85-USA 2yr.
7. Meier-Meadows El Jezebel EX-92-USA GMD DOM 2*
8. Meier-Meadows Melwood Jacki VG-87-USA DOM

Bemachtig een prachtige pink uit de familie van Meier-Meadows El Jezebel EX-92-USA GMD DOM 2*. De familie van de legende zelf: O-Bee Manfred JUSTICE (O-MAN). Een dochter van SILLIAN direkt uit 8 generaties AB of EXCELLENTE moeders. Dezelfde familie als Paeßens Jezebel - verkocht voor 44.000 EUR in de European Masters Sale 2019.

Get a piece of the incredible family of Meier-Meadows El Jezebel EX-92-USA GMD DOM 2*. The family of the legend himself: O-Bee Manfred JUSTICE (O-MAN). Heifer by SILLIAN straight out 8 generations VG- or EXCELLENT dams!! Same family as Paeßens Jezebel - sold for 44.000 EUR @ European Masters Sale '19.

M. JK Eder Freddie Isabella VG-86-NL 2yr.

1ste plaats Fokveedag Hoornaar 2016



3. M. O-Bee HWH Jet Stream Ina VG-87-NL 2yr.



O-Bee Manfred JUSTICE (O-MAN)
DE LEGENDE - eveneens uit deze koefamilie!



Lianna Kolff

Christmas @ JK Eder TAG SALE

21. JK Eder Jordy **CAMIE** 6 *RC

NL 627396906 • 12.09.2019

Cycle McGucci JORDY-RED

(McGucci x Gold Chip x Lion King)

JK Eder High Octane Camie 3 VG-87-NL 2yr.

Conf. VG-87-NL VG-MS 2yr.

2.01 342d 10.856kgM 4.1% 441f 3.4% 369P
3.02 305d 11.810kgM 4.02%F 3.43%P (proj)

- >11.000kgM with 3.4% PROTEIN /
>11.000kgM met 3.4% EIWIT

Stantons HIGH OCTANE

JK Eder Boss Camie VG-87-NL 2yr.

Conf. VG-87-NL VG-MS 2yr.

2.03 305d 11.732kgM 3.9% 457F 3.2% 372P
3.07 305d 14.293kgM 3.9% 551F 3.1% 447P
4.10 305d 12.532kgM 4.4% 548F 3.2% 402P

- **Super production cow: >1000kg Fat + Protein /**
Super productie koe: >1000kg vet + eiwit
- **Maternal sister to: / Half zus van:**
Zandenburg Meridian Camilla VG-89-NL 2yr.
- Deelnemster EK Colmar 2016 voor Nederland
- 1ste in haar klasse op de HHH-Show '15

KNS BOSS

Zandenburg Snowman Camilla *TY VG-88-NL

Conf. VG-88-NL VG-88-MS 2yr.

2.04 305d 9.446kgM 4.0% 377F 3.4% 317P
4.00 557d 17.398kgM 4.2% 731F 3.5% 607P
5.09 409d 16.326kgM 4.0% 653F 3.1% 510P
7.00 391d 14.713kgM 4.1% 604F 3.5% 512P

- s. **Flevo Genetics SNOWMAN**
- **Res. 2-Yr. Old Champion Wintershow West-Brabant '14**
- **Several sons in AI /** Meerdere stieren bij de K.I.

Volgende moeders

4. Anderstrup Ramos Camill *BY EX-90-DK
5. Anderstrup Laudan Camille VG-89-DK 2yr.
6. Chemello Jocko Bengé VG-87-IT 2yr.
7. wwChemello Mtoto Farfalle VG-85-IT 2yr.
8. Chemello Slocum Gia VG-88-IT

Klasse JORDY-RED kalf met ROOD FACTOR uit de familie van Anderstrup Ramos Camill EX-90-DK, die meerde stieren voor de K.I. leverde, verkocht werd voor 26.000 EUR en een bewezen fokkoe is! Een zus van de grootmoeder was in het Nederlandse team op het EK in Colmar in 2016 & 1ste in haar klasse op de HHH-Show 2015!

Lovely JORDY-RED heifer with RED CARRIER from the family of Anderstrup Ramons Camill EX-90-DK who has several sons in AI, sold for 26.000 EUR and is a great transmitter!! A sister to grand dam was successful shown for team Netherlands @ European Show in Colmar '16 & 1st at National HHH-Show 2015!!

Vierde moeder: Anderstrup Ramos Camill *BY EX-90-DK



Links op de foto: Zandenburg Meridian Camilla VG-89-NL 2yr.
- Zus van de grootmoeder



Gr. M: Zandenburg Snowman Camilla VG-88-NL 2yr.

Christmas @ JK Eder TAG SALE

22. JK Eder Rocca **ROXINNE** 4 Pp *RC

NL 680096588 • 04.01.2019

NVI index (12/19): 325 NVI // 370 INET // 756 Levensduur // 107 Uier // +1229 Melk // +0.12% Eiwit

Caudumer BATCH P

(Battlecry x Rocky x Lawn Boy P)

JK Eder Rocca Roxinne 1 Red VG-86-NL 2yr.

Conf. VG-86-NL VG-MS 2yr.

2.03 308d 9.920kgM 3.5% 349F 3.6% 353P

- High R&W Polled Apoll-P dtr in the Dutch index / Hoge RODE Apoll-P dochter op NVI basis
- Tracing back the one and only 'Queen of the Breed' Glenridge Citation Roxy! / Terugvoerend op de 'Koningin van het ras' Glenridge Citation Roxy!

Schreur APOLL-P-RED

Rocca Roxinne *RC GP-84-NL 2yr.

Conf. GP-84-NL VG-86-MS 2yr.

2.04 388d 11.448kgM 4.0% 452F 3.7% 417P
3.06 364d 13.576kgM 3.8% 514F 3.4% 456P
4.08 305d 11.670kgM 4.10%F 3.51%P (proj)

Swissbec BREKEM *RC

Morningview NH Roxy *RC

Conf. NC

Died just after calving

- s. Hunsberger ALCHEMY *RC
- She looked very promising! Should scored VG easily in the WAL/BEL system / Zag er beloftevol uit! Zou gemakkelijk AB ingeschreven zijn in het WAL/BEL systeem.

Volgende moeders

4. Morningview Super Roxy *RC EX-90-USA DOM
5. Morningview Pronto C-Rae *RC EX-90-USA
6. Early-Autumn Golden Rae *RC EX-93-USA
7. Scientific Beauty Rae *RC EX-90-USA DOM
8. Scientific Jubilant Rae *RC EX-90-USA DOM
9. Hanoverhill Tony Rae EX-96-USA 3E GMD DOM
10. Hanoverhill TT Roxette EX-94-USA 2E GMD DOM
11. Mil-R-Mor Roxette EX-90-USA GMD DOM
12. C Glenridge Citation Roxy EX-97-USA 4E GMD

HOORNLOZE & rood factor Batch P dochter met +324 NVI terugvoerend op de 'Koningin van het ras' C Glenridge Citation Roxy EX-97!! Haar moeder is een beloftevolle rode vaars van Brekem *RF, ingeschreven met AB-86 2jr. en produceerde >9.900kgM met 3.6% EIWIT in haar eerste lijst!! Pedigree met 10 generaties EXCELLENTE moeders!!

POLLED & Red Carrier Batch P daughter with +324 NVI backed by the 'Queen of the breed' C Glenridge Citation Roxy EX-97!! Her dam is a promising R&W VG-86 2yr. Brekem *RC daughter who produced >9.900kgM with 3.6% PROTEIN in her first lactation. Pedigree with 10 gen. EXCELLENT dams!

Moeder: JK Eder Rocca Roxinne 1 P-Red VG-86-NL 2yr.
Hoge RODE Apoll-P dochter op NVI basis



Dezelfde familie: Scientific Debutante Rae EX-92-USA



3. M. Morningview NH Roxy *RC

Lianna Kolff

Christmas @ JK Eder TAG SALE

23. 4 EMBRYOS

#4 Coomboona Zipit MIRAND PP *RC x R DG Adalyn-Red VG-87-NL 2yr.

Method: IVF - Grade A - Direct Transfer

Location: The Netherlands

Coomboona Zipit MIRAND PP *RC

(3.74 PTAT / +1368 Milk / #1 PP & *RC PTAT)

R DG Adalyn-Red VG-87-NL 2yr.

Conf. VG-87-NL 2yr.

La1 344d 10.412kgM 4.42% 460F 3.70% 385P

- Dam to REDALEX @ Intermizoo (s. Argo)
Moeder van REDALEX @ Intermizoo (v. Argo)
- **3.7% PROTEIN, HIGH GENOMICS, RED, AIKO COW FAMILY!** / 3.7% EIWIT, HOGE GENOMICS, ROOD, AIKO KOE FAMILIE

Stantons ENTITLE *RC

R DG Avira Red VG-85-NL 2yr.

Conf. VG-85-NL 2yr.

2.03 305d 9.601kgM 4.1% 392F 3.8% 361P
3.07 305d 11.126kgM 3.8% 420F 3.3% 372P

- Dam to R DG ALADDIN-Red @ Cogent /
Moeder van R DG ALADDIN-RED @ Cogent
- Former top 5 CTPI R&W Heifer in Europe! /
Voormalig top 5 GTPI ROOD in Europa!
- Sister to the high R&W bulls Aviator Red,
Alphaman and Adam / Zus van de hoge RODE
stieren Aviator Red, Alphaman en Adam
- **3.8% PROTEIN!!** / 3.8% EIWIT!!

Ladys-Manor OLYMPIAN *RC

BTS-Avea Red VG-87-NL VG-89-MS 2yr.

Conf. VG-87-NL VG-89-MS 2yr.

2.03 323d 9.529kgM 4.1% 386F 3.3% 314P
3.09 305d 9.908kgM 4.2% 418F 3.5% 342P

- s. Our-Favorite DETOX *RC
- Show winner! 1st in Beilen and Res. Champion 2yr. Old
Opmeer (Against B&W's)
- Maternal sister to AIKMAN *RC /
Halfzus van AIKMAN *RF

Volgende moeders

4. KHW-I Aika Baxter VG-89-CAN 5yr. (MAX)
5. KHW Goldwyn Aiko-ET *RC EX-91-USA DOM
6. Kamps-Hollow Altitude-ET *RC EX-95-USA 2E DOM
7. Clover-Mist Alisha EX-93-USA 3E GMD DOM
8. Clover-Mist Augy Star EX-94-USA 4E DOM
9. D-R-A August EX-96-USA 4E DOM

Exclusive MIRAND PP *RF (#1 *RF & PP PTAT stier) embryos van de moeder van Redalex @ Intermizoo: R DG Adalyn-Red VG-87-NL 2yr. // 3.7% EIWIT met >10.000kgM. Super lijn van de Aiko / Apple koe familie!!

Exclusive MIRAND PP *RC (#1 *RC & PP PTAT sire) embryos from the dam to Redalex @ Intermizoo: R DG Adalyn-Red VG-87-NL 2yr. // 3.7% PROTEIN with >10.000kgM. Tremendous line of the Aiko / Apple cow family!!

Donor: R DG Adalyn-Red VG-87-NL 2yr.



Anna Joosse



3. M. KHW-I Aika Baxter VG-89-CAN 5yr. (MAX)
Moeder van o.a. AIKMAN *RF



M. R DG Avira-Red VG-85-NL 2yr.

Christmas @ JK Eder TAG SALE

24. 4 FEMALE EMBRYOS

#4 FEMALE Peak AltaDATELINE x Ms DG Delta Bridgett *RC VG-89-USA EX-MS La1.

Method: IVF - Grade A - Direct Transfer

Location: The Netherlands

FEMALE Peak AltaDATELINE

(2756 GTPI / 2.97 PTAT)

Ms DG Delta Bridgett VG-89-USA EX-MS La1.

Conf. VG-89-USA EX-MS La1.

2-09 346d 15.202kgM 4.5% 683F 3.2% 493P

- **MAX-scored DELTA dtr: VG-89-USA EX-MS La1.** MAX ingeschreven DELTA dtr: AB-89-USA La1.
- **Bridgett is a TOP ranking *RC GTPI cow in the States** / Bridgett is een hoge geïndexeerde *RF GTPI koe in Amerika.

Mr Mogul DELTA

Calbrett Supersire Barb *RC VG-86-USA 2yr.

Conf. VG-86-USA 2yr.

2-04 365d 13.859kgM 4.2% 582F 3.4% 471P

- **Dam to the former No. 1 & No. 2 GTPI Red Heifers in the World** / Moeder van de voormalige #1 & #2 GTPI rode pinken van het ras!
- **Many sons in AI!** / Meerdere zonen bij de K.I.

Seagull-Bay SUPERSIRE

Rainyridge Super Beth *RC VG-86-CAN 2yr.

Conf. VG-86-CAN 2yr.

2.03 365d 10.768kgM 3.7% 398F 3.5% 373P
4.06 365d 15.267kgM 3.9% 588F 3.5% 540P

- **s. Charlesdale SUPERSTITION**
- **Top seller of the Rocky Mountain High Sale for \$79,000**
- **Dam to:** / Moeder van: Calbrett Supersire Barb *RC, topseller Corndale Summer Sale for \$265,000
- **Multiple sons in AI** / Meerdere zonen bij de K.I.

Volgende moeders

4. Rainyridge Talent Barbara *RC EX-95-USA 2*
5. RF Outside Breeze EX-95-USA 2E
6. Rayverley Briana Milan EX-CAN 2E
7. Rainyridge Tony Beauty EX-CAN 5E 9*
8. Despics Tempo Diana VG-85-CAN

GESEKSTE AltaDATELINE (2756 GTPI / 2.97 PTAT) embryo's uit de MAX-ingeschreven en top *RF GTPI koe: Ms DG Delta Bridgett *RF AB-89-USA EX-MS La1. Haar volle zus heeft meerdere nakomelingen >2700 GTPI en haar Modesty dtr was de veilingtopper op de National Convention Sale '17 voor \$105,000. Terugvoerend op de All-American: Rainyridge Talent Barbara *RC EX-95-USA.

FEMALE AltaDATELINE (2756 GTPI / 2.97 PTAT) embryos from the MAX-scored and top ranking *RC GTPI cow: Ms DG Delta Bridgett *RC VG-89-USA EX-MS La1. Her full sister has several progeny >2700 GTPI and her Modesty dtr topped the National Convention Sale '17 for \$105,000. Tracing back to the All-American & All-Canadian: Rainyridge Talent Barbara *RC EX-95-USA.

Donor: Ms DG Delta Bridgett *RC VG-89-USA EX-MS La1.



3. M. Rainyridge Talent Barbara *RC EX-95-USA All-American & All-Canadian koe!



M. Calbrett Supersire Barb *RC VG-86-USA 2yr.

Christmas @ JK Eder TAG SALE

25. JK Eder DG CHAYENNE

NL 627396759 • 22.05.2019

GTPI index (12/19): +3.38 PTAT // +2.75 UDC // +2.02 FLC // +389 Milk

COL DG CRUSHTIME

(Crush x Mogul x Meridian)

JK Eder DG Carmen 2

Due: / Kalft: januari 2020

- #9 PTAT cow > 2 years in Europe! (12/19) / #9 PTAT koe > 2 jaar in Europa! (12/19)
- One of the highest Conformation cows in Europe: Conf. +14 (12/19) / Eén van de hoogste exterieur koeien op Conformation in Europa: Conf. +14 (12/19)



JK Eder DG Chayenne I Zij wordt verkocht!!

Walnutlawn SOLOMON

DG JK Eder Carmen NC

Conf. NC

La1 104d 2.863kgM 3.8% 108F 3.1% 89P
La1 305d 7.773kgM 4.1%F 3.4%P (proj)

- Atwood daughter from one of the greatest young cows in Europe / Atwood dochter uit één van de beste jonge koeien van Europa!
- The former #5 PTAT Atwood dtr in Europe! / Voormalig #5 PTAT Atwood van Europa!!

Maple-Downs I GW ATWOOD

JK DG Esmeralda EX-92-NL EX-94-MS

Conf. EX-92-NL EX-94-MS

2.02 323d 8.888kgM 4.3% 382F 3.5% 311P
3.02 439d 15.325kgM 4.2% 649F 3.6% 550P
4.07 313d 13.160kgM 4.2% 560F 3.3% 437P

- 6th place European Show Libramont '19
- Udder Champion Noordeloos '18
- Res. Champion 2yr. Old National HHH Show '16
- Champion 2yr. Old Dairy Fair Mariënwaerd '16
- Res. Int. Champion Dairy Fair Mariënwaerd '17
- Res. Champion 2yr. Old Hoornaar '16

Volgende moeders

4. Carf Emeraude EX-91-NL
5. Agathe VG-88-FR
6. Toulouse VG-89-FR 2yr.
7. Rosière EX-90-FR
8. Menthe VG-89-FR
9. Ixias EX-93-FR
10. Eglantine EX-94-FR

Ze is de #13 PTAT van de september '19 tussendraai met +3.38 PTAT en voert terug met een geweldige vaderlijn: Crushtime x Solomon x Atwood op de 6de geplaatste koe op de Europese show in Libramont '19: JK DG Esmeralda EX-92-NL!! Diepe Franse koe familie die vele succesvolle showkoeien voortbracht.

She is the #13 PTAT female of the September '19 intermediate run with +3.38 PTAT and traces over a amazing sire stack: Crushtime x Solomon x Atwood back to the 6th placed European Show '19 cow: JK DG Esmeralda EX-92-NL!! Deep French cow family with several show winning dams!!

Derde moeder: JK DG Esmeralda EX-92-NL EX-94-MS

6de plaats Europese show Libramont 2019 & Res. kampioene vaarzen HHH-Show '16



M. JK DG Carmen 2



Dezelfde familie: Amarante EX-FR
- 2x Frans koe van het jaar!!



Han Hopman

Christmas @ JK Eder TAG SALE

26. 4 FEMALE EMBRYOS

#4 FEMALE Farnear Aria ADDISON *RC x JK Eder DG Carmen 2 (+14 Conf. // +3.86 PTAT)

Method: IVF - Grade A - Direct Transfer

Location: The Netherlands

FEMALE Farnear Aria ADDISON *RC

(Crush x McCutchen x Destry *RC)

JK Eder DG Carmen 2

Due: / Kalft: januari 2020

- #9 PTAT cow > 2 years in Europe! (12/19) / #9 PTAT koe > 2 jaar in Europa! (12/19)
- One of the highest Conformation cows in Europe: Conf. +14 (12/19) / Eén van de hoogste exterieur koeien op Conformation in Europa: Conf. +14 (12/19)

Walnutlawn SOLOMON

DG JK Eder Carmen NC

Conf. NC

La1 104d 2.863kgM 3.8% 108F 3.1% 89P
La1 305d 7.773kgM 4.1%F 3.4%P (proj)

- Atwood daughter from one of the greatest young cows in Europe / Atwood dochter uit één van de beste jonge koeien van Europa!
- The former #5 PTAT Atwood dtr in Europe! / Voormalig #5 PTAT Atwood van Europa!!

Maple-Downs I GW ATWOOD

JK DG Esmeralda EX-92-NL EX-94-MS

Conf. EX-92-NL EX-94-MS

2.02 323d 8.888kgM 4.3% 382F 3.5% 311P
3.02 439d 15.325kgM 4.2% 649F 3.6% 550P
4.07 313d 13.160kgM 4.2% 560F 3.3% 437P

- 6th place European Show Libramont '19
- Udder Champion Noordeloos '18
- Res. Champion 2yr. Old National HHH Show '16
- Champion 2yr. Old Dairy Fair Mariënwaardt '16
- Res. Int. Champion Dairy Fair Mariënwaardt '17
- Res. Champion 2yr. Old Hoornaar '16

Volgende moeders

4. Carf Emeraude EX-91-NL
5. Agathe VG-88-FR
6. Toulouse VG-89-FR 2yr.
7. Rosière EX-90-FR
8. Menthe VG-89-FR
9. Ixias EX-93-FR
10. Eglantine EX-94-FR

Vrouwelijke embryo's met een hoge PA van +3.71 PTAT. Moeder JK Eder DG Carmen 2 (+3.86 PTAT // +14 Conf.) voert terug op 6de geplaatste koe op de Europese show in Libramont '19: JK DG Esmeralda EX-92-NL!! Diepe Franse koe familie die vele succesvolle showkoeien voortbracht.

Huge PA-embryos by ADDISON *RC from JK DG Carmen 2 (+3.86 PTAT // +14 Conf.) PA of +3.71 PTAT and tracing back to the 6th placed European Show '19 cow: JK DG Esmeralda EX-92-NL!! Deep French cow family with several show winning dams!!

Derde moeder: JK DG Esmeralda EX-92-NL EX-94-MS

6de plaats Europese show Libramont 2019 & Res. kampioene vaarzen HHH-Show '16



M. JK DG Carmen 2



Dezelfde familie: Amarante EX-FR
- 2x Frans koe van het jaar!!



Lianna Kolff

27. 4 FEMALE EMBRYOS

#4 FEMALE Our-Favorite UPGRADE x JK Eder DG Unix Elly

Method: ET - Grade A - Direct Transfer

Location: The Netherlands

FEMALE Our-Favorite UPGRADE

(Crush x Atwood x Shottle)

JK Eder DG Unix Elly

Due: / Kalft af zomer 2020

- Beautiful Unix heifer with +2.96 PTAT of JK DG Esmeralda EX-92-NL EX-94-MS / Klasse Unix dochter met +2.96 PTAT uit JK DG Esmeralda EX-92-NL EX-94 uier

Croteau Lesperron UNIX

JK DG Esmeralda EX-92-NL EX-94-MS

Conf. EX-92-NL EX-94-MS

2.02 323d 8.888kgM 4.3% 382F 3.5% 311P
3.02 439d 15.325kgM 4.2% 649F 3.6% 550P
4.07 313d 13.160kgM 4.2% 560F 3.3% 437P

- 6th place European Show Libramont '19
- Udder Champion Noordeloos '18
- Res. Champion 2yr. Old National HHH Show '16
- Champion 2yr. Old Dairy Fair Mariënwaerd '16

Val-Bisson DOORMAN

Carf Emeraude EX-91-NL

Conf. EX-91-NL

2.03 570d 17.721kgM 3.9% 694F 3.4% 601P
4.00 330d 15.317kgM 3.9% 598F 3.2% 482P
5.06 305d 15.930kgM 3.7% 589F 3.1% 497P

- Champion 2-Yr. Old SPACE 2011
- 1st Jr. 2-Yr. National Show Le Mans 2011
- 6th in the finals at the Nat. NRM Show 2012
- Grand Champion Wintershow West-Brabant 2014

Volgende moeders

4. Agathe VG-88-FR
5. Toulouse VG-89-FR 2yr.
6. Rosière EX-90-FR
7. Menthe VG-89-FR
8. Ixias EX-93-FR
9. Eglantine EX-94-FR

Wat zoekt u nog meer dan deze super exterieur lijn? GESEKSTE embryo's van UPGRADE (+4.40 PTAT) uit JK DG Esmeralda EX-92-NL EX-94 uier haar prachtige UNIX pink!! Esmeralda was 6de in, volgens velen, de sterkste klasse van de Europese show dit jaar in Libramont.

What do you prefer more in this exceptional type combination? FEMALE embryos by UPGRADE (+4.40 PTAT) from JK DG Esmeralda EX-92-NL EX-94-MS her beautiful UNIX heifer!! Esmeralda was 6th in her section at the European Show in Libramont this year!!

Moeder: JK DG Esmeralda EX-92-NL EX-94-MS

6de plaats Europese show Libramont 2019 // foto tijdens NRM 2019



M. JK DG Esmeralda EX-92-NL EX-94-MS



Nicht: JK Eder DG Edrea EX-90-NL EX-91-MS 4yr.
- Res. kampioene vaarzen Wintershow Noordeloos 2018

Christmas @ JK Eder TAG SALE

28. JK Eder DG **ELS** NC

NL 894095751 • 05.05.2017 • Kalf datum: 13.08.2019 • Huidige dagproductie: 36,9 kgM
2.03 305d 10.458kgM 3.88%F 3.38%P (proj) • Geïnsemineerd met THUNDERSTORM op 17.11.2019
+3.57 PTAT as a milking 2yr. Old!! (12/19)

OH-River-Syc **BYWAY**

(Meridian x Atwood x Shottle)

JK Eder DG Elisa VG-87-NL VG-88-MS 2yr.

Conf. VG-87-NL VG-88-MS 2yr.

2.01 305d 8.892kgM 4.4% 391F 3.8% 339P
3.06 305d 11.163kgM 4.8% 535F 3.8% 535P

- **3.8% PROTEIN** / 3.8% EIWIT
- **Halfzus van:** / Maternal sister to DG JK Eder Edrea EX-90-NL EX-91-MS 4yr. - Res. 2-Yr Old Champion Wintershow Noordeloos 2018
- **Great production & transmitting cow** / Geweldige productie en fokkoe

Val-Bisson **DOORMAN**

JK Eder Emeraude 2 VG-88-NL VG-89-MS 2yr.

Conf. VG-88-NL VG-89-MS 2yr.

2.02 367d 8.504kgM 4.9% 414F 4.0% 338P
3.06 322d 8.649kgM 5.1% 440F 3.9% 340P
4.06 359d 8.051kgM 4.6% 369F 4.0% 320P

- **Res. Champion 2-Yr. Old & Best Udder Hoornaar '15**
- **Almost 4.0% PROTEIN** / Bijna 4.0% EIWIT!!
- **Sister to:** / Zus van: JK DG Esmeralda EX-92-NL

Amighetti **NUMERO UNO**

Carf Emeraude EX-91-NL

Conf. EX-91-NL

2.03 570d 17.721kgM 3.9% 694F 3.4% 601P
4.00 330d 15.317kgM 3.9% 598F 3.2% 482P
5.06 305d 15.930kgM 3.7% 589F 3.1% 497P

- **s. Braedale GOLDWYN**
- **Champion 2-Yr. Old SPACE 2011**
- **1st Jr. 2-Yr. National Show Le Mans 2011**
- **6th in the finals at the Nat. NRM Show 2012**
- **Grand Champion Wintershow West-Brabant 2014**

Volgende moeders

4. Agathe VG-88-FR
5. Toulouse VG-89-FR 2yr.
6. Rosière EX-90-FR
7. Menthe VG-89-FR
8. Ixias EX-93-FR
9. Eglantine EX-94-FR

Geweldige vaars met 36,9kgM, de volle zus van de vaarzenkampioene Fokveedag Hoornaar 2019: JK DG Byway Eliza AB-88-NL 2jr!!! Uw ticket voor de show!! Grootmoeder is de halfzus van JK DG Esmeralda EX-92-NL, 6de in volgens velen de sterkste klasse van de Europese Show in Libramont dit jaar.

Incredible 2-Yr Old with 36,9kgM and full sister to the 2-Yr Old Champion Fokveedag Hoornaar 2019: JK DG Byway Eliza VG-88-NL 2yr!!! Your ticket for the coloured shavings!! Grand dam is the maternal sister to JK DG Esmeralda EX-92-NL, 6th in her section at the European Show in Libramont 2019.

Moeder: JK Eder DG Elisa VG-87-NL VG-88-MS 2yr.

Geweldige productie en show koe!! 3.8% EIWIT!!



JK Eder DG Els - zij wordt verkocht!!



Volle zus: JK Eder DG Elisa VG-88-NL 2yr.
Vaarzenkampioene Fokveedag Hoornaar 2019

29. JK Eder Boulet **GENI-I** 7

NL 680096533 • 27.11.2018

Stantons **HIGH OCTANE**

(McCutchen x Observer x Shottle)

JK Eder Boulet Gen-I I VG-87-NL La1

Conf. VG-87-NL VG-88-MS La1

2.06 366d 13.178kgM 3.5% 461F 3.1% 408P
3.08 384d 17.165kgM 3.4% 578F 3.1% 534P
4.11 346d 16.608kgM 3.6% 589F 3.1% 518P

- **Different sire stack: DAY x IOTA x PLANET /**
Andere vaderlijn: DAY x IOTA x PLANET

Minnigan-Hills **DAY**

Boulet Geni-Iota GP-84-NL VG-85-MS 3yr.

Conf. GP-84-NL VG-85-MS 3yr.

2.05 305d 11.324kgM 3.5% 396F 3.3% 374P
4.02 305d 11.636kgM 3.9% 454F 3.4% 396P
5.03 325d 13.832kgM 3.6% 497F 3.3% 452P

- **Former top 25 GTPI cow in Europe /**
Voormalig top 25 GTPI koe van Europa
- **Same family as: /** Dezelfde familie als: Survivor @ Amils, Vignory & Artois @ Genes Diffusion en Bactari @ Dynamis

Regancrest **AltalOTA**

Boulet Evea Planet VG-87-FR 2yr.

Conf. VG-87-FR 2yr.

2.03 305d 8.918kgM 3.3% 294F 3.2% 285P
4.03 305d 12.316kgM 3.1% 382F 3.2% 394P

- **s. Ensenada Taboo PLANET**
- **High GTPI Planet from a French cow family!! /**
Hoge GTPI Planet uit een Franse koe familie!!

Volgende moeders

4. Attlesocko VG-86-FR 2yr.
5. Socko Ella VG-87-FR
6. Pam Ella EX-93-FR
7. Nalla 2be3 VG-85-FR
8. Hello One EX-91-FR

Schitterende show pink van de TYPE sensatie HIGH OCTANE zelf! Uit de populaire stier familie van Pam Ella EX-93-FR!! Dezelfde familie als Survivor @ Amils, Vignory & Artois @ Genes Diffusion en Bactari @ Dynamis. Grootmoeder was de voormalig top 25 GTPI koe van Europa! Moeder is een beloftevolle vaars van DAY ingeschreven met AB-87-NL AB-88 uier La1.

Huge show heifer by the TYPE sensation HIGH OCTANE himself! Out of the popular bull producing family of Pam Ella EX-93-FR!! Same family as Survivor @ Amils, Vignory & Artois @ Genes Diffusion and Bactari @ Dynamis. Grand dam was the former top 25 GTPI cow in Europe!! Dam is a promising first calver by DAY scored with VG-87-NL VG-88-MS La1.

Gr. Moeder: Boulet Geni-Iota GP-84-NL VG-85-MS 3yr.

Voormalig top 25 GTPI koe van Europa



3. M. Boulet Evea Planet VG-87-FR 2yr.



Volle zus van Evea Planet: Boulet Easy Anis VG-87-FR 2yr.

Christmas @ JK Eder TAG SALE

Han Hopman

30. JK Eder **EVY**

NL 680096494 • 15.10.2018

GTPI index (12/19): +2567 GTPI // 815 NM\$ // +1.41 PTAT // +1264 Milk // 0.15%F // 0.08%P

ABS MEDLEY

(Yoder x Balisto x O-Style)

JK Eder Evalyn VG-87-NL La1

Conf. VG-87-NL VG-88-MS La1

2.06 226d 8.127kgM 4.0% 324F 3.4% 279P
2.06 305d 10.614kgM 4.11%F 3.51%P (proj)

- 1st place Dairy Fair Mariënwaerdt '19 /
1ste in haar klasse op de Dairy Fair Mariënwaerdt '19

S-S-I Montross JEDI

JK Eder Eva I VG-88-NL EX-MS 4yr.

Conf. VG-88-NL EX-MS 4yr.

2.05 443d 11.751kgM 5.1% 597F 3.7% 429P
3.09 421d 14.286kgM 5.1% 734F 3.7% 533P

- Extraordinary production cow: >14.000kgM with 3.7% PROTEIN / Fantastische productie koe: >14.000kgM met 3.7% EIWIT

L-L-M Dairy PRESIDENT

HS Mogul Eva GP-84-NL VG-88-MS 2yr.

Conf. GP-84-NL VG-88-MS 2yr.

2.02 305d 8.514kgM 4.6% 391F 3.6% 307P

- s. Mountfield SSI Dcy MOGUL

Volgende moeders

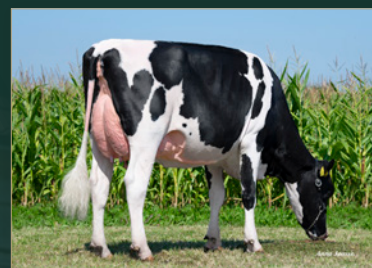
4. Royal Idevra Eva VG-86-IT 2yr.
5. Royal Idevra Titanic Estate EX-90-IT
6. Royal Idevra Eгна TV VG-85-IT 2yr.
7. Excelgen Manfred Brooke VG-86-USA 1st La DOM
8. Ricecrest Duster Brooke EX-90-USA GMD DOM
9. Ricecrest Luke Lauren EX-91-USA GMD DOM
10. Ricecrest Southwind Kaye VG-87-USA GMD DOM
11. Ricecrest Ned Boy Noreen EX-91-2E-USA GMD DOM
12. Ricecrest Jemini Jayanna VG-87-USA DOM
13. Ricecrest Elevation Ella VG-86-USA DOM

+2567 GTPI & 815 NM\$ MEDLEY dochter van de rubriekswinnares Dairy Fair Mariënwaerdt '19: JK Eder Evalyn AB-87-NL AB-88 uier La1. Imponerende vaars van JEDI met een actuele dagproductie van >40kgM!! Familie met 12 generaties AB of EX-moeders terugvoerend op Royal Idevra Titanic Estate EX-90-IT.

+2567 GTPI & 815 NM\$ MEDLEY daughter of the classwinner Dairy Fair Mariënwaerdt '19: JK Eder Evalyn VG-87-NL VG-88-MS La1. Extraordinary 2-Yr Old by JEDI producing currently >40kgM / day!! Family with 12 generations VG- or EX-dams tracing back to Royal Idevra Titanic Estate EX-90-IT.

Moeder: JK Eder Evalyn VG-87-NL VG-88-MS La1

1ste plaats in haar rubriek op de Dairy Fair Mariënwaerdt '19



Moeder: JK Eder Evalyn VG-87-NL VG-88-MS La1



5. M. Royal Idevra Titanic Estate EX-90-IT

Christmas @ JK Eder TAG SALE

31. 4 FEMALE EMBRYOS

#4 FEMALE Oh-River-Syc CRUSHABULL x Al-Lew Monterey Ashley VG-89-USA EX-MS La1.

Method: IVF - Grade A - Direct Transfer

Location: The Netherlands

FEMALE Oh-River-Syc CRUSHABULL

(Crush x Mogul x Meridian)

Al-Lew Monterey Ashley VG-89-USA EX-MS

Conf. VG-89-USA EX-MS La1.

2-09 348d 14.006kgM 4.2% 590F 3.7% 512P

- Dam to ARISTOCRAT (2784 GTPI / 2.75 PTAT / Moeder van ARISTOCRAT (2784 GTPI / 2.75 PTAT)
- Aristocrat is the World Classic Sale topseller ever for \$620,000 / Aristocrat is de leidende World Classic Sale veilingtopper voor \$620,000
- Dam to ARROW (2609 GTPI / 3.63 PTAT) @ Al-Total / Moeder van ARROW (2609 GTPI / 3.63 PTAT) @ Al-Total

View-Home MONTEREY

Al-Lew Mgl Astute 1207 EX-91-USA

Conf. EX-91-USA

2-04 3x 365d 13.739kgM 4.1% 563F 3.4% 469P
3-08 2x 285d 10.827kgM 4.2% 452F 3.3% 362P

- The 8th generation EXCELLENT in a row! / 8ste generatie EXCELLENT op rij!
- Incredible Mogul dtr / Super Mogul dtr!

Mountfield SSI DCY MOGUL

Al-Lew Dmn Amazon 1059 EX-90-USA 3yr.

Conf. EX-90-USA 3yr.

2-00 2x 365d 11.834kgM 3.6% 425F 3.2% 376P
3-04 2x 365d 15.168kgM 3.7% 558F 3.4% 514P

- s. Ronelee Toystory DOMAIN
- One of the best Domain daughters in the breed / Eén van de beste Domain dochters van het ras!

Volgende moeders

4. GBM Shottle America VG-86-USA DOM
5. GBM Durham BC Annabell EX-90-USA DOM
6. GBM Charles Janelle EX-93-USA 2E DOM
7. GBM Val Blackstar Jean EX-94-USA 3E GMD DOM
8. GBM Valiant Janice EX-92-USA 2E DOM
9. GBM Valiant Janice EX-92-USA 2E DOM
10. Sylvan-Dell Atlas Jill EX-90-USA 2E

GESEKSTE Crushabull embryo's (+3.98 PTAT) uit Al-Lew Monterey Ashley AB-89-USA EX-uier La1. - de moeder van Mr Frazzled ARISTOCRAT (2784 GTPI / 2.75 PTAT & veilingtopper World Classic Sale voor \$620,000). Ashley is een van de meest speciale fokkoeien van het ras het afgelopen decennium.

FEMALE Crushabull embryos (+3.98 PTAT) from Al-Lew Monterey Ashley VG-89-USA EX-MS La1. - the dam to Mr Frazzled ARISTOCRAT (2784 GTPI / 2.75 PTAT & topseller World Classic Sale for \$620,000). Ashley is one of the most special brood cows of the past decade!!

Donor: Al-Lew Monterey Ashley 1346 VG-89-USA EX-MS La1.



Halfbroer van de embryos: ARISTOCRAT (+2784 GTPI / +2.75 PTAT)



M. Al-Lew Mgl Astute 1207 EX-91-USA



Christmas @ JK Eder TAG SALE

551HO03701

I Mr Frazzled

ARISTOCRAT



AiTotal

Frazzled x Al-Lew Monterey Ashley VG-89-USA EX-MS La1 (MAX)
x EX-91-USA x EX-90-USA x VG-86 x EX-90 x EX-93 x EX-94 x EX-92 x EX-91 x EX-90

GTPI **PTAT**
+2784 **+2.75**

The **ONLY**

available bull in the breed combining:

>2780 GTPI, >1500 MILK, >0 DPR, >2.75 PTAT & >3 Udders!

Perfect set of legs: +0.41 RLS / +1.35 RLR



Han Hopman

Dam: Al-Lew Monterey Ashley VG-89-USA EX-MS (MAX)

32. 3 EMBRYOS

#3 Braedale GOLDWYN x All-Star Jotan Bella EX-92-DE EX-94-MS

Method: IVF - Grade A - Direct Transfer

Location: The Netherlands

Braedale GOLDWYN

(James x Storm B/R x AltaGrand)

3.562 EXCELLENT dtrs in Canada (12/19)

All-Star Jotan Bella EX-92-DE EX-94-MS

Conf. EX-92-DE EX-94-MS

2.05 287d 7.435kgM 4.1% 307F 3.5% 262P
3.06 251d 8.978kgM 4.0% 359F 3.7% 334P
4.05 305d 12.195kgM 4.1% 505F 3.5% 435P

- **Dam to Patbull-Red @ KI-Samen**
Moeder van Patbull-Red @ KI-Samen
- **Dam to:** / Moeder van:
WR Aikman Brandy EX-92-DE EX-94-MS
- Sr. Champion R&W RUW Show '19
- Res. Int. Champion R&W RUW Show '17
WR Rudolph Bacardi EX-91-DE EX-91-MS
- Res. Sr. Champion R&W RUW Show '19
WR Beyonce (s. Ladd P-Red)
- 2-Yr Old Champion R&W RUW Show '15
All-Star Lucas Bellavita EX-92-CH
- **Grand dam to:** / Grootmoeder van:
All-Star Alo-York Bellavisto VG-85-CH 2yr.
- 2nd place Swiss Red Night 2019

JOTAN-RED

Stadel Benita VG-89-CH EX-91-MS

Conf. VG-89-CH EX-91-MS

3.04 305d 8.706kgM 4.7% 413F 3.9% 337P
4.06 305d 8.070kgM 5.1% 407F 4.1% 333P

- **Average of 4.0% PROTEIN!!** /
Gemiddeld 4.0% EIWIT!!

STADEL-RED

Rubens Beauty VG-88-CH EX-90-MS

Conf. VG-88-CH EX-90-MS

3.04 273d 8.906kgM 2.9%F 260F 3.3% 293P
4.03 197d 8.061kgM 3.4% 277F 3.3% 269P

- s. STBQ RUBENS *RC

Legendarische GOLDWYN embryo's uit één van de beste Zwitserse fokkoeien: All-Star Jotan Bella EX-92-DE EX-94 uier!! Moeder van meerdere EXCELLENTE en show winnende dochters in Duitsland & Zwitserland!! Creëer een half zus van WR Aikman Brandy EX-92-DE EX-94-MS - Senior Champion R&W RUW Show '19 en WR Rudolph Bacardi EX-91-DE - Res. Senior Champion R&W RUW Show '19!

Legendary GOLDWYN embryos from one of the best Swiss brood cows: All-Star Jotan Bella EX-92-DE EX-94-MS!! Dam to several EXCELLENT and show winning daughters in Germany & Switzerland!! Create your maternal sister to WR Aikman Brandy EX-92-DE EX-94-MS - Senior Champion R&W RUW Show '19 and WR Rudolph Bacardi EX-91-DE - Res. Senior Champion R&W RUW Show '19!

Donor: All-Star Jotan Bella EX-92-DE EX-94-MS



Zus van embryo's: WR Aikman Brandy EX-92-DE EX-94-MS
Senior Champion R&W RUW Show 2019



Zus van embryo's: WR Rudolph Bacardi EX-91-DE EX-91-MS
Reserve Senior Champion R&W RUW Show 2019

Christmas @ JK Eder TAG SALE

33. 4 FEMALE EMBRYOS

#4 FEMALE Mr Blondin WARRIOR-RED x Carf Emeraude EX-91 -NL

Method: IVF - Grade A - Direct Transfer

Location: The Netherlands

FEMALE Mr Blondin WARRIOR-RED

(Avalanche*RC x Doorman x Atwood)

Carf Emeraude EX-91-NL

Conf. EX-91 -NL EX-91 -MS

2.03 570d 17.721kgM 3.9% 694F 3.4% 601P
4.00 330d 15.317kgM 3.9% 598F 3.2% 482P
5.06 305d 15.930kgM 3.7% 589F 3.1% 497P

- **Champion 2-Yr. Old SPACE 2011**
- **1st Jr. 2-Yr. National Show Le Mans 2011**
- **6th in the finals at the Nat. NRM Show 2012**
- **Grand Champion Wintershow West-Brabant 2014**
- **3rd Sr. Cow at the Nat. Show Le Mans 2011**

Braedale GOLDWYN

Agathe VG-88-FR

Conf. VG-88-FR

2.03 305d 10.366kgM 3.2% 332F 3.1% 321P
3.06 305d 13.338kgM 3.5% 467F 3.1% 413P

Picston SHOTTLE

Toulouse VG-89-FR 2yr.

Conf. VG-89-FR 2yr.

2.02 305d 10.804kgM 4.0% 432F 3.2% 346P
3.11 305d 11.653kgM 4.3% 501F 3.2% 373P

- **Full sister to the proven bull Texas at Genes Diffusion / Volle zus van de dochtergeteste stier Texas bij Genes Diffusion**
- **Maternal sister to Umelin - Dam to the famous Amarante EX-90-FR / Halfzus van Umelin - moeder van de bekende Amarante EX-90-FR**

Volgende moeders

4. Rosière EX-90-FR
5. Menthe VG-89-FR
6. Ixias EX-93-FR
7. Eglantine EX-94-FR

De kans op een ROOD FACTOR Emeraude met deze GESEKSTE embryo's van de roodbonte sensatie WARRIOR-RED - +4.28 PTAT uit Carf Emeraude EX-91 -NL!! Uw mogelijkheid op een ROOD FACTOR zus van JK DG Esmeralda EX-92-NL EX-94 uier!! Dezelfde familie als Amarante EX-FR - 2x Franse koe van het jaar.

Create your RED CARRIER Emeraude with these FEMALE embryos by the R&W type sensation WARRIOR-RED - +4.28 PTAT from Carf Emeraude EX-91 -NL!! The chance on a RED CARRIER sister to JK DG Esmeralda EX-92-NL EX-94-MS!! Same family as Amarante EX-FR - 2x French Cow of the Year!!



Halfzus van embryo's: JK DG Esmeralda EX-92-NL



Dezelfde familie: Capj Irana - 1ste @ Colmar '16

M. Carf Emeraude EX-91 -NL

Frans nationaal kampioene & super fokkoe!!

Christmas @ JK Eder TAG SALE



DAM Blondin Doorman Lovergirl VG-88-CAN EX-91-MS 3yr.
2.01 365d 15.433kgM 4.3%F 3.4%P

MGD MS Licorice GC Lovely VG-88-CAN VG-89-MS 3yr.
3.05 365d 12.552kgM 4.5%F 3.3%P

MGGD Rockymountain Talent Licorice EX-95-USA
3.10 323d 15.772kgM 4.0%F 3.4%P



- Super exclusive son of the sensation AVALANCHE
- One of the most complete sires in the breed for SHOW TYPE
- Wide & Sloped Rumps with incredible udders & legs
- Great sire line: AVALANCHE x DOORMAN x GOLD CHIP x Rockymountain Talent Licorice EX-95-USA

🇨🇦 12/19 MS +11 / F&L +14 / DS +8 / R+8 / Conformation +13
+8 Chest Width

SEMEN AVAILABLE NOW

Sexed & Conventional

©Vicki Fletcher



3. Dam: Rockymountain Talent Licorice EX-95-USA



Grand dam: MS Licorice GC Lovely VG-88-CAN VG-89-MS 3yr.



Rockymountain Talent Licorice EX-95-USA
HM Grand Champion Royal '10 & Madison '11

CDCB GENETIC EVALUATIONS (DEC. 2019)			BETR. 80%
Milk PTAM	+397 lb	Combined F+P CFP	+46 lb
Fat % PTAF%	+0.04	Fat PTAF	+26 lb
Protein % PTAP%	+0.03	Protein PTAP	+20 lb
Somatic Cell Score SCS	2.69	Net Merit NMS	+344
Productive Life PL	+2.7		
Livability LIV	+0.4		
Fertility Index FI	-1.2		
Pregnancy Rate DPR	-1.0		
Conception Rate HCR/CCR	-0.3 / -2.7		
Calving Ease SCE/DCE	7.7 / 4.1		
Still Birth SSB/DSB	8.5 / 5.0		

CDCB GENETIC EVALUATIONS (DEC. 2019)				BETR. 78%
TPI +2238	PTAT +3.68	UDC +2.84	FLC +2.49	
		-2 -1 0 1 2		
Stature	+3.44 Short			Tall
Strength	+2.58 Frail			Strong
Body Depth	+2.71 Shallow			Deep
Dairy Form	+2.26 Tight Rib			Open Rib
Rump Angle	+0.47 High Pins			Sloped
Thurl Width	+2.42 Narrow			Wide
Rear Legs - Side View	-0.26 Posty			Sickled
Rear Legs - Rear View	+3.31 Hock-in			Straight
Foot Angle	+2.71 Low Angle			Steep Angle
Feet & Legs Score	+2.88 Low			High
Fore Udder Attachment	+3.86 Loose			Strong
Rear Udder Height	+4.27 Low			High
Rear Udder Width	+3.93 Narrow			Wide
Udder Cleft	+2.28 Weak			Strong
Udder Depth	+2.80 Deep			Shallow
Front Teat Placement	+1.52 Wide			Close
Rear Teat Placement	+0.99 Wide			Close
Teat Length	+0.70 Short			Long

AI total

Supplier of Genetic solutions!

WWW.AI-TOTAL.COM

Christmas

@ JK Eder TAG SALE



Prettig Kerstdagen een schitterend 2020!!